

WAAS CH 99414 W08A	APP CRS 079°	Rwy Idg TDZE 463 Apt Elev 463	5000
----------------------------------------	------------------------	---------------------------------------------------	-------------

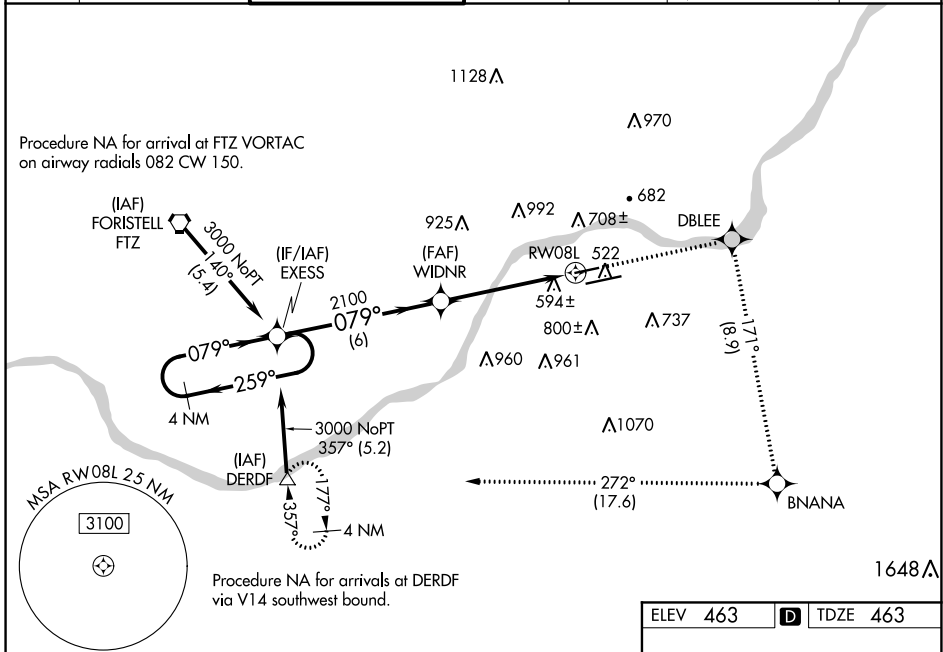
RNAV (GPS) RWY 8L

SPRIT OF ST LOUIS (SUS)

⚠ For uncompensated Baro-VNAV systems, LNAV/VNAV NA below -15°C (5°F) or above 54°C (130°F). DME/DME RNP-0.3 NA. Helicopter visibility reduction below 3/4 SM NA. VDP and Baro-VNAV NA when using St Louis Lambert Intl altimeter setting. When local altimeter setting not received, use St Louis Lambert Intl altimeter setting and increase LPV DA to 912, LNAV/VNAV DA to 1132 and all MDA 60 feet, increase LPV all Cats visibility to 1 1/2 miles.

MISSÉ APPROACH: Climb to 3000 direct DBLEE and right turn on track 171° to BNANA and right turn on track 272° to DERDF and hold.

ATIS 134.8	ST. LOUIS APP CON 126.5 254.3	SPRIT TOWER* 124.75 (CTAF) 0 257.2	GND CON 121.7	CLNC DEL 133.1	ST. LOUIS CLNC DEL 121.7 (when tower closed)	UNICOM 122.95
----------------------	-----------------------------------------	----------------------------------------------	-------------------------	--------------------------	-----------------------------------------------------------	-------------------------



NC-3, 19 MAY 2022 to 16 JUN 2022

NC-3, 19 MAY 2022 to 16 JUN 2022

4 NM Holding Pattern	EXCESS	3000	DBLEE	BNANA	DERDF
		↑	✦	tr 171°	tr 272°
GP 3.00° TCH 41	3000	2100	2100	RW08L	
	← 259°	→ 079°	→ 079°	→ 171°	→ 272°
	6 NM	3.3 NM	1.7 NM		
CATEGORY	A	B	C	D	
LPV DA	855-1 3/8	392 (400-1 3/8)		NA	
LNAV/VNAV DA	1075-2 1/2	612 (700-2 1/2)		NA	
LNAV MDA	1040-1	577 (600-1)		NA	
CIRCLING	1100-1	637 (700-1)		NA	

ELEV 463 **D** TDZE 463

MIRL Rwy 8L-26R **L**
HIRL Rwy 8R-26L **L**