

WAAS CH 61114 W08B	APP CRS 079°	Rwy Idg TDZE 462 Apt Elev 463	7414
--	------------------------	---	-------------

RNAV (GPS) RWY 8R

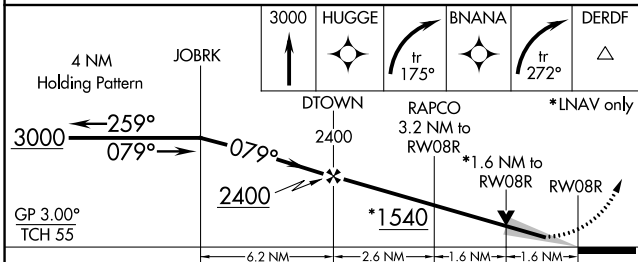
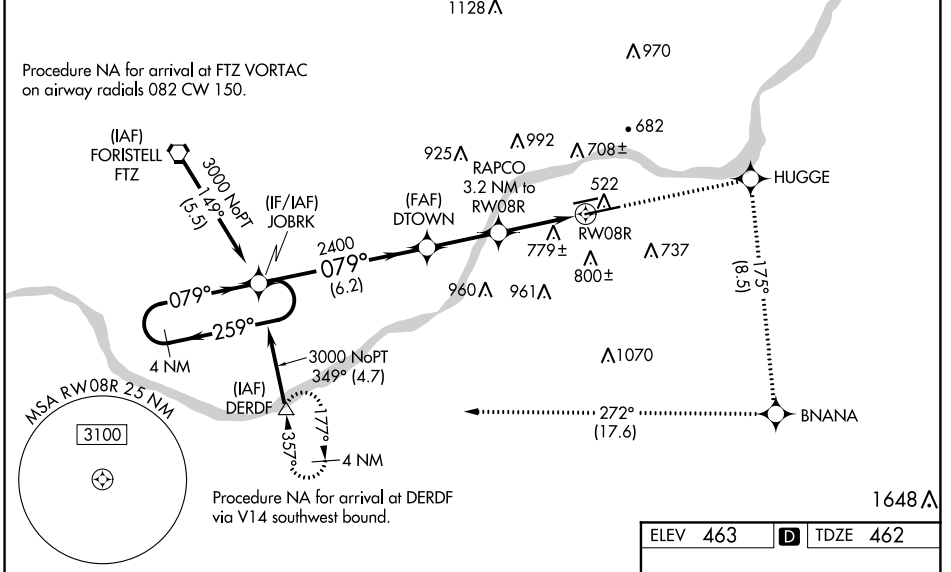
SPRIT OF ST LOUIS (SUS)

⚠ For uncompensated Baro-VNAV systems, LNAV/VNAV NA below -15°C (5°F) or above 54°C (130°F). DME/DME RNP-0.3 NA. Baro-VNAV and VDP NA when using St Louis Lambert Intl altimeter setting. When local altimeter setting not received, use St Louis Lambert Intl altimeter setting and increase all DA 57 feet all MDA 60 feet, increase visibility LNAV/VNAV all Cats and LNAV Cats C/D 1/8 mile, and Circling Cat C 1/4 mile. For inop MALSR, increase LNAV/VNAV all Cats visibility to 2 1/2 mile and LNAV Cats C/D visibility to 1 1/8 mile. For inop MALSR when using St Louis Lambert Intl altimeter setting, increase LNAV Cats C/D visibility to 1 3/4 mile. # RVR 1800 authorized with use of FD or AP or HUD to DA, NA when using St Louis Lambert Intl altimeter setting.

MALSR

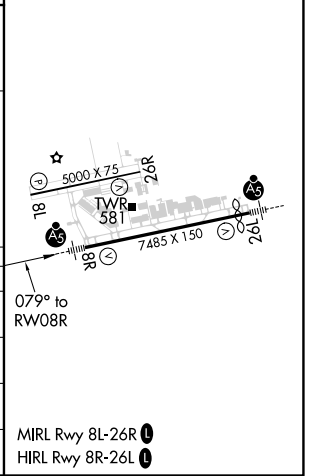
MISSED APPROACH:
Climb to 3000 direct HUGGE and right turn on track 175° to BNANA and right turn on track 272° to DERDF and hold.

ATIS 134.8	ST. LOUIS APP CON 126.5 254.3	SPRIT TOWER* 124.75 (CTAF) 0 257.2	GND CON 121.7	CLNC DEL 133.1	ST. LOUIS CLNC DEL 121.7 (when tower closed)	UNICOM 122.95
----------------------	---	--	-------------------------	--------------------------	---	-------------------------



ELEV 463	D TDZE 462
----------	-------------------

CATEGORY	A	B	C	D
LPV DA#		662/24	200 (200-1/2)	
LNAV/VNAV DA		1129-1 7/8	667 (700-1 7/8)	
LNAV MDA	1040/24	578 (600-1/2)	1040-1 1/4	578 (600-1 1/4)
CIRCLING	1100-1	637 (700-1)	1120-1 3/4 657 (700-1 3/4)	1140-2 1/4 677 (700-2 1/4)



NC-3, 19 MAY 2022 to 16 JUN 2022

NC-3, 19 MAY 2022 to 16 JUN 2022