

APP CRS <b>307°</b>	Rwy Idg <b>6203</b>
	TDZE <b>4840</b>
	Apt Elev <b>4849</b>

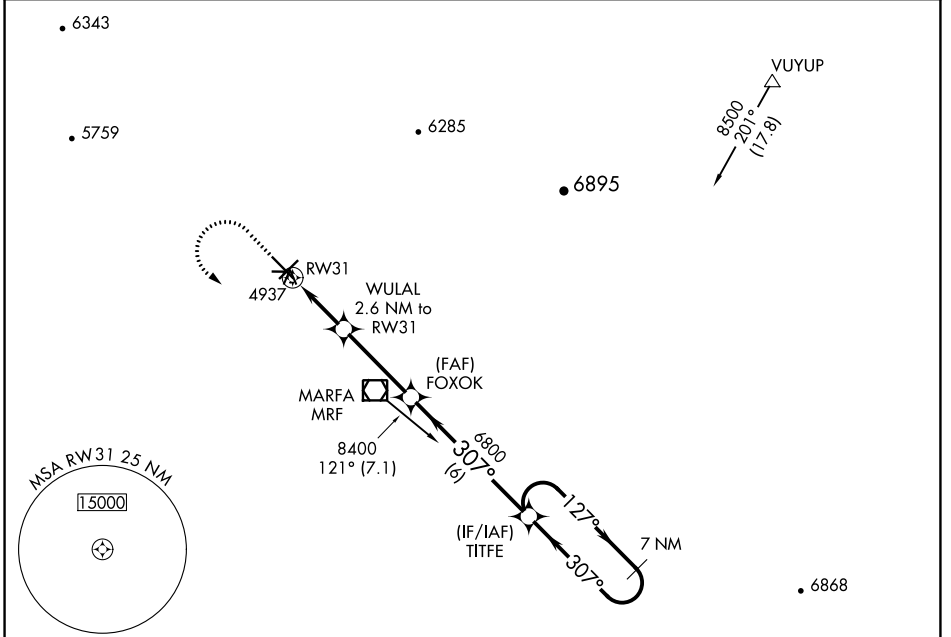
# RNAV (GPS) RWY 31

MARFA MUNI (MRF)

▼ When local altimeter setting not received, procedure NA.  
▲ DME/DME RNP-0.3 NA.  
 Visibility reduction by helicopters NA.

MISSED APPROACH: Climb to 5300 then climbing left turn to 9000 direct TITFE and hold, continue climb-in-hold to 9000.

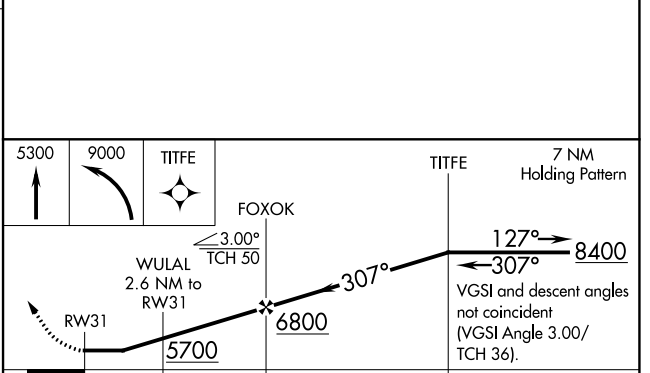
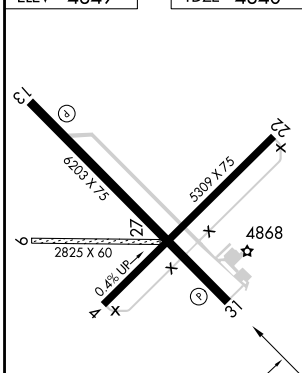
AWOS-3PT <b>134.025</b>	ALBUQUERQUE CENTER <b>135.875 292.15</b>	UNICOM <b>122.8 (CTAF) ①</b>
----------------------------	---	---------------------------------



SC-3, 19 MAY 2022 to 16 JUN 2022

SC-3, 19 MAY 2022 to 16 JUN 2022

ELEV <b>4849</b>	TDZE <b>4840</b>
------------------	------------------



CATEGORY	A	B	C	D
LNAV MDA	5200-1 360 (400-1)			
CIRCLING	5280-1 431 (500-1)	5300-1 451 (500-1)	5440-1½ 591 (600-1½)	5780-3 931 (1000-3)