

WAAS CH 56234 W18A	APP CRS 184°	Rwy Idg 3800 TDZE 835 Apt Elev 835
--	------------------------	---

RNAV (GPS) RWY 18

DUPONT/LAPEER (D95)

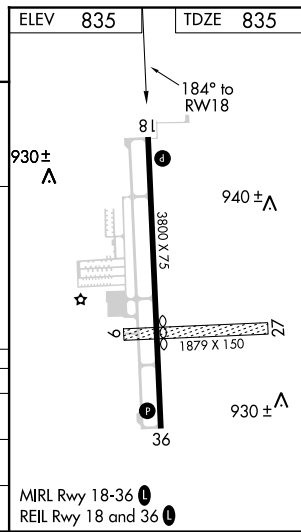
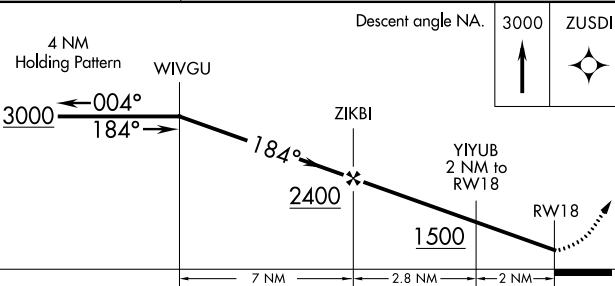
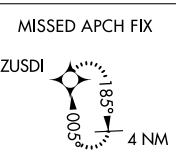
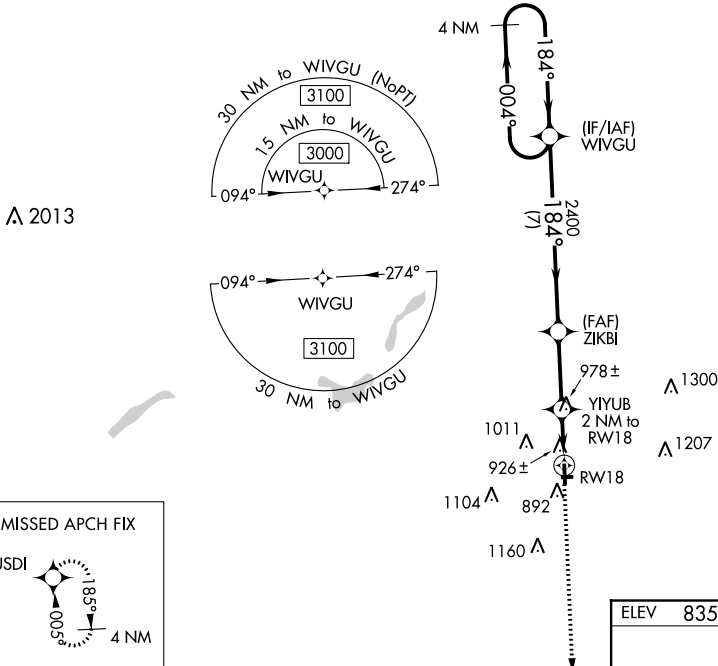
⚠ DME/DME RNP-0.3 NA. Helicopter visibility reduction below 3/4 SM NA. When local altimeter setting not received, use Flint altimeter setting and increase all MDAs 60 feet and increase LP Cat C visibility 1/8 mile, LNAV Cat C and Circling Cat C visibility 1/4 mile. Circling NA to Rwy 9 and 27.

MISSED APPROACH:
Climb to 3000 direct ZUSDI and hold.

AWOS-3P
134.050

GREAT LAKES APP CON ★
118.8 257.9

UNICOM
123.0 (CTAF) ①



CATEGORY	A	B	C	D
LP MDA	1180-1 345 (400-1)			NA
LNAV MDA	1240-1	405 (500-1)	1240-1 1/8 405 (500-1 1/8)	NA
C CIRCLING	1300-1 465 (500-1)	1380-1 545 (600-1)	1460-1 3/4 625 (700-1 3/4)	NA

EC-1, 19 MAY 2022 to 16 JUN 2022

EC-1, 19 MAY 2022 to 16 JUN 2022