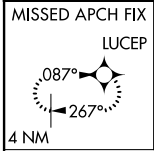


LAAS CH <b>20662</b> RPI <b>GJVV</b>	APP CRS <b>267°</b>	Rwy Idg <b>9402</b> TDZE <b>95</b> Apt Elev <b>96</b>
--	------------------------	---

# GLS RWY 26L

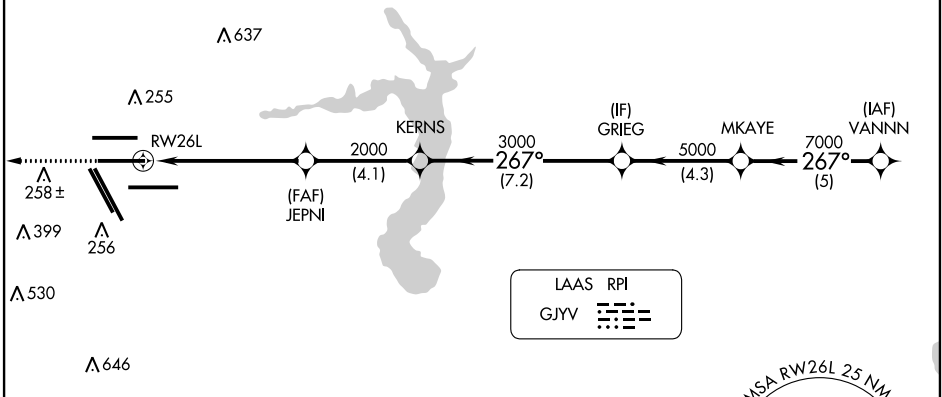
GEORGE BUSH INTCNL/HOUSTON (IAH)

<b>NA</b> For inop ALSF, increase GLS all Cats visibility to RVR 4000. Simultaneous approach authorized with Rwy 26R and Rwy 27. DME/DME RNP-0.3 NA. GPS required. Use of FD or AP providing RNAV track guidance required during simultaneous operations. Autoland approach NA.	ALSF-2 	MISSED APPROACH: Climb to 3000 direct LUCEP and hold.			
D-ATIS <b>124.05</b>	HOUSTON APP CON <b>120.05 379.1</b> EAST <b>124.35 316.15</b> WEST	HOUSTON TOWER <b>125.35 290.2</b>	GND CON <b>118.575</b>	CLNC DEL <b>128.1</b>	CPDLC



Λ 995

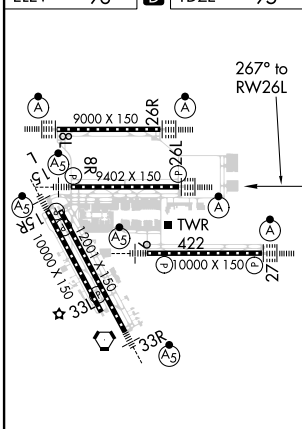
## RADAR REQUIRED



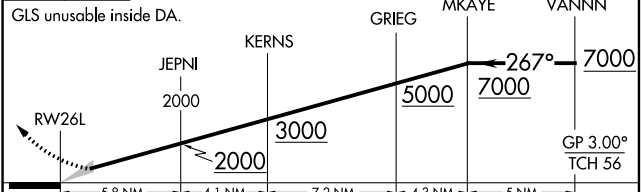
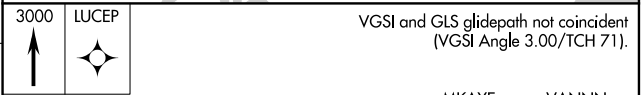
SC-5, 19 MAY 2022 to 16 JUN 2022

SC-5, 19 MAY 2022 to 16 JUN 2022

ELEV 96	<b>D</b>	TDZE 95
---------	----------	---------



TDZ/CL Rwy 8R, 8L, 15R, 26R, 26L, 27 and 33L  
HIRL all Rwy



CATEGORY	A	B	C	D	E
GLS DA	295/18 200 (200-½)				