

HOUSTON, TEXAS

AL-5461 (FAA)

22083

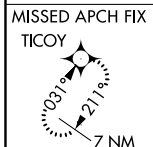
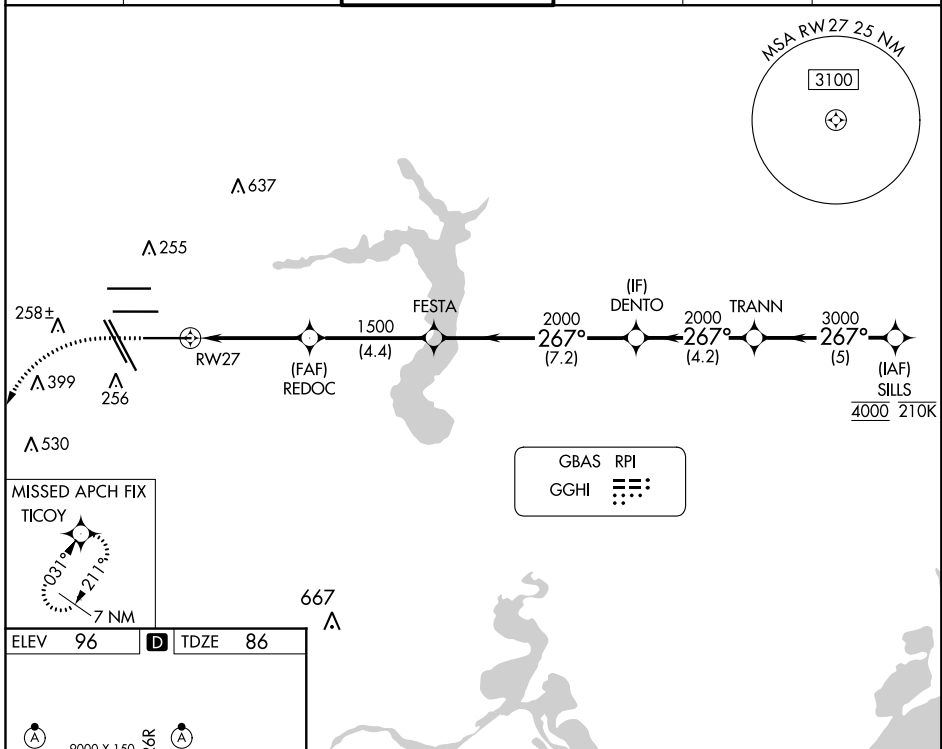
GBAS CH 22306 GGHI	APP CRS 267°	Rwy Idg 10000 TDZE 86 Apt Elev 96
--	------------------------	--

GLS RWY 27

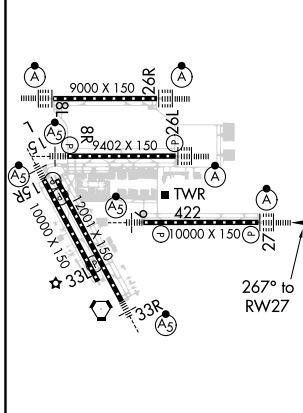
GEORGE BUSH INTCNL/HOUSTON (IAH)

RNP APCH. GPS required.	Simultaneous approach authorized. Use of FD or AP required during simultaneous operations. Autopilot coupled approach NA below 286. For inop ALS, increase GLS Cat E visibility to RVR 4000.	ALSF-2 	MISSED APPROACH: Climb to 560 then climbing left turn to 3100 direct TICOY and hold.
NA			

D-ATIS 124.05	HOUSTON APP CON 120.05 379.1 EAST 124.35 316.15 WEST	HOUSTON TOWER 135.15 290.2	GND CON 118.575	CLNC DEL 128.1	CPDLC
-------------------------	--	--------------------------------------	---------------------------	--------------------------	-------

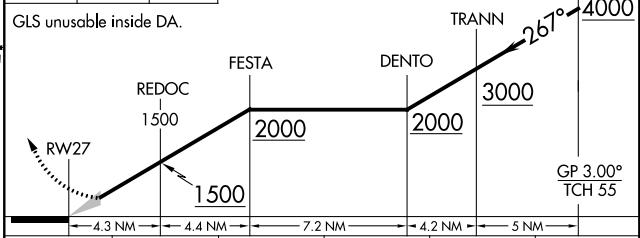


ELEV 96	D	TDZE 86
---------	----------	---------



TDZ/CL Rwy 8R, 8L, 15R, 26R, 26L, 27 and 33L
HIRL all Rwy

560	3100	TICOY	VGSI and GLS glidepath not coincident (VGSI Angle 3.00/TCH 70).
-----	------	-------	---



CATEGORY	A	B	C	D	E
GLS DA	286/18 200 (200-1/2)				

HOUSTON, TEXAS
Amdt 1D 12AUG21

29°59'N-95°20'W

GLS RWY 27

SC-5, 19 MAY 2022 to 16 JUN 2022

SC-5, 19 MAY 2022 to 16 JUN 2022