

LAAS CH 21073 RPI GBZU	APP CRS 087°	Rwy Idg 9000 TDZE 95 Apt Elev 96
--	------------------------	---

GLS RWY 8L

GEORGE BUSH INTCNTL/HOUSTON (IAH)

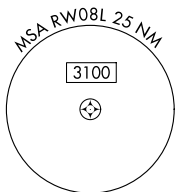
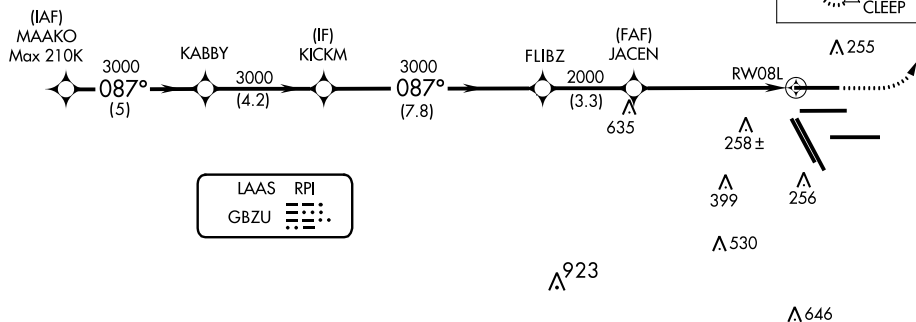
NA For inop ALSF, increase GLS all Cats visibility to RVR 4000. Simultaneous approach authorized with Rwy 8R and Rwy 9. DME/DME RNP-0.3 NA. GPS Required. Autoland approach NA. Use of FD or AP providing RNAV track guidance required during simultaneous operations.

ALSF-2

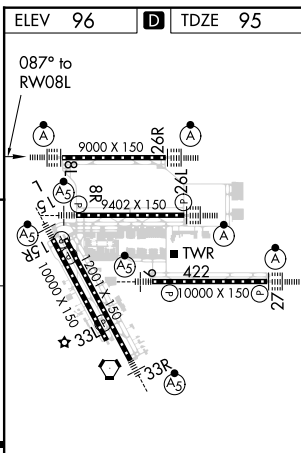
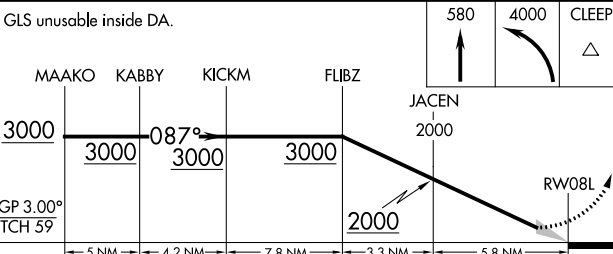
MISSED APPROACH: Climb to 580 then climbing left turn to 4000 direct CLEEP and hold.

D-ATIS 124.05	HOUSTON APP CON 120.05 379.1 EAST 124.35 316.15 WEST	HOUSTON TOWER 120.72 290.2	GND CON 121.7	CLNC DEL 128.1	CPDLC
-------------------------	--	--------------------------------------	-------------------------	--------------------------	-------

RADAR REQUIRED



GLS unusable inside DA.



CATEGORY	A	B	C	D	E
GLS DA	295/18			200 (200-1/2)	

TDZ/CL Rwys 8R, 8L, 15R, 26R, 26L, 27 and 33L
HIRL all Rwys

SC-5, 19 MAY 2022 to 16 JUN 2022

SC-5, 19 MAY 2022 to 16 JUN 2022