

LAAS CH <b>20251</b> RPI <b>GIAH</b>	APP CRS <b>087°</b>	Rwy Idg <b>9402</b> TDZE <b>96</b> Apt Elev <b>96</b>
--	------------------------	---

# GLS RWY 8R

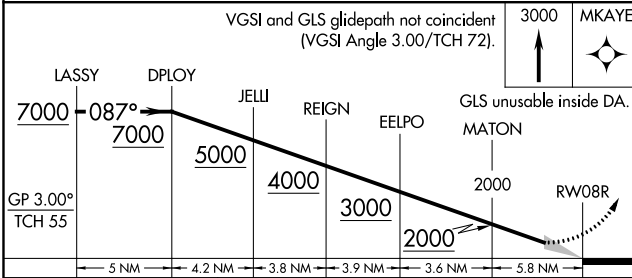
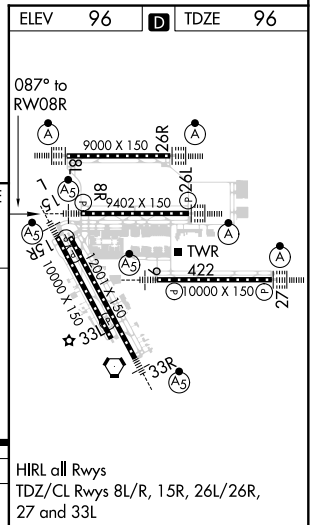
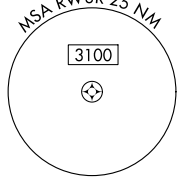
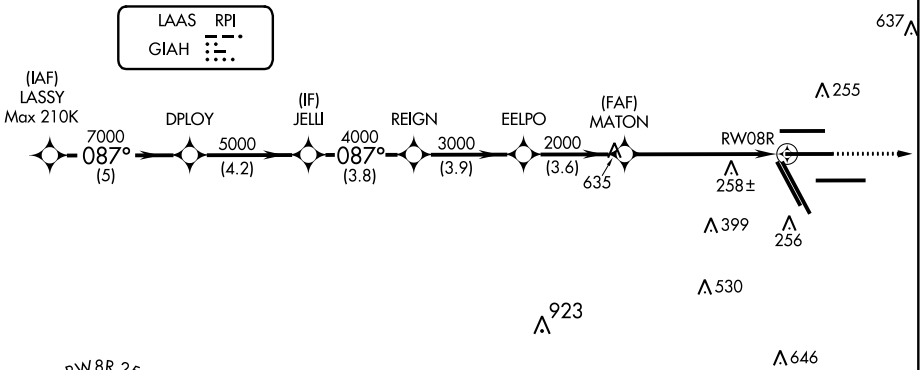
GEORGE BUSH INTCNL/HOUSTON (IAH)

<p><b>▽</b> For inop MALSR, increase GLS all Cats visibility to RVR 4000. Simultaneous approach authorized with Rwy 8L and Rwy 9. DME/DME RNP-0.3 NA. GPS required. Use of FD or AP providing RNAV track guidance required during simultaneous operations. Autoland approach NA.</p> <p><b>△ NA</b></p>	<p>MALSR </p> <p>MISSED APPROACH: Climb to 3000 direct MKAYE and hold.</p>
---	--

D-ATIS <b>124.05</b>	HOUSTON APP CON <b>120.05 379.1 EAST</b> <b>124.35 316.15 WEST</b>	HOUSTON TOWER <b>125.35 290.2</b>	GND CON <b>118.575</b>	CLNC DEL <b>128.1</b>	CPDLC
-------------------------	--	--------------------------------------	---------------------------	--------------------------	-------



## RADAR REQUIRED



CATEGORY	A	B	C	D	E
GLS DA	296/18		200 (200-1/2)		

HIRL all Rwys  
TDZ/CL Rwys 8L/R, 15R, 26L/26R, 27 and 33L

SC-5, 19 MAY 2022 to 16 JUN 2022

SC-5, 19 MAY 2022 to 16 JUN 2022