


LAAS CH 21895 RPI GUYO	APP CRS 087°	Rwy Idg 10000 TDZE 91 Apt Elev 96
--	------------------------	--

GLS RWY 9

GEORGE BUSH INTCNL/HOUSTON (IAH)

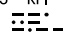
⚠ NA For inop MALSR, increase GLS all Cats visibility to RVR 4000. Simultaneous approach authorized with Rwy 8L/R. DME/DME RNP-0.3 NA. Use of FD or AP providing RNAV track guidance required during simultaneous operations. GPS required. Autoland approach NA. **RVR 1800 authorized with use of FD or AP or HUD to DA.

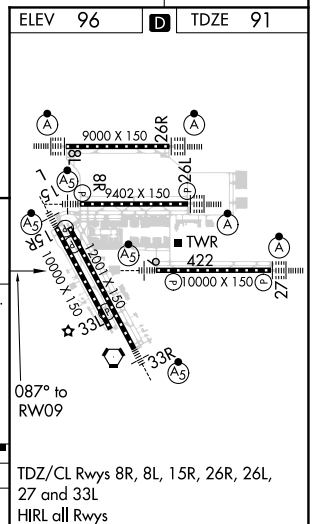
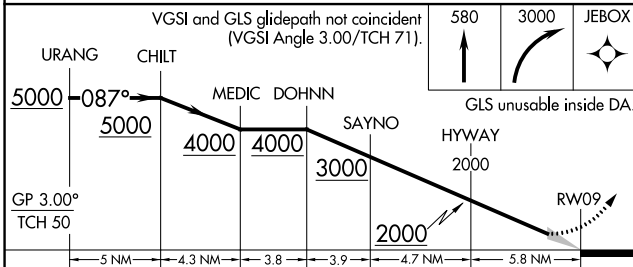
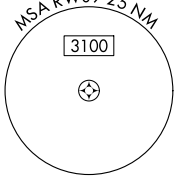
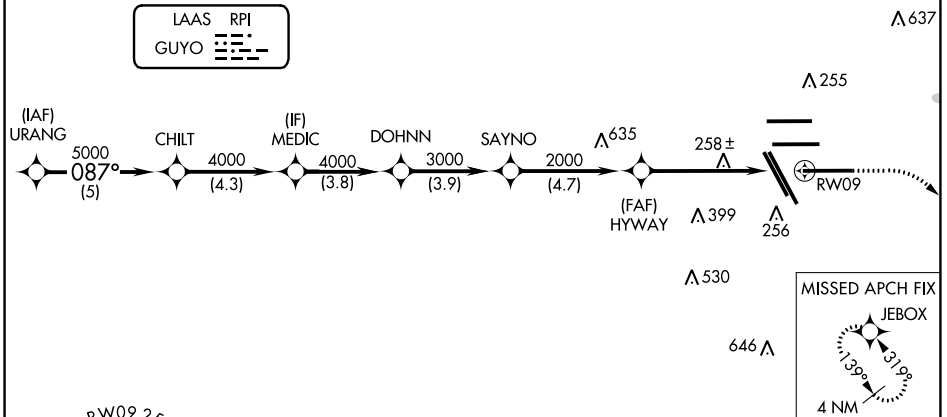
MALSR 

MISSED APPROACH: Climb to 580 then climbing right turn to 3000 direct JEBOX and hold.

D-ATIS 124.05	HOUSTON APP CON 120.05 379.1 EAST 124.35 316.15 WEST	HOUSTON TOWER 135.15 290.2	GND CON 118.575	CLNC DEL 128.1	CPDLC
-------------------------	--	--------------------------------------	---------------------------	--------------------------	-------

RADAR REQUIRED

LAAS RPI GUYO 
--



CATEGORY	A	B	C	D	E
GLS DA**	291/24		200 (200-1/2)		

TDZ/CL Rwy 8R, 8L, 15R, 26R, 26L, 27 and 33L
HIRL all Rwy