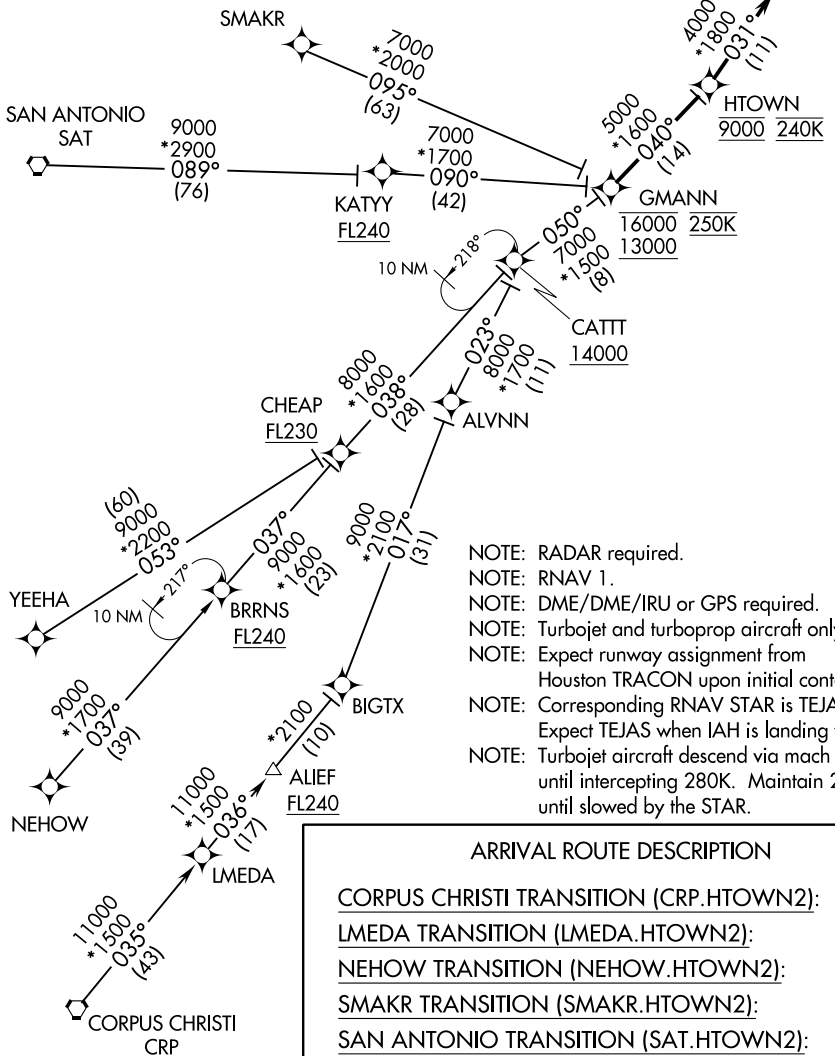


HTOWN TWO ARRIVAL(RNAV)

HOUSTON APP CON
119.175 291.675
D-ATIS
124.05

WDLNS
7000 210K



- NOTE: RADAR required.
- NOTE: RNAV 1.
- NOTE: DME/DME/IRU or GPS required.
- NOTE: Turbojet and turboprop aircraft only.
- NOTE: Expect runway assignment from Houston TRACON upon initial contact.
- NOTE: Corresponding RNAV STAR is TEJAS. Expect TEJAS when IAH is landing west.
- NOTE: Turbojet aircraft descend via mach number until intercepting 280K. Maintain 280K until slowed by the STAR.

ARRIVAL ROUTE DESCRIPTION

- CORPUS CHRISTI TRANSITION (CRP.HTOWN2):
- LMEDA TRANSITION (LMEDA.HTOWN2):
- NEHOW TRANSITION (NEHOW.HTOWN2):
- SMAKR TRANSITION (SMAKR.HTOWN2):
- SAN ANTONIO TRANSITION (SAT.HTOWN2):
- YEEHA TRANSITION (YEEHA.HTOWN2):

From GMANN on track 040° to cross HTOWN at 9000 and at 240K, then on track 031° to cross WDLNS at 7000 and at 210K. Expect ILS or LOC RWY 08R.

NOTE: Chart not to scale.

SC-5, 19 MAY 2022 to 16 JUN 2022

SC-5, 19 MAY 2022 to 16 JUN 2022

HTOWN TWO ARRIVAL(RNAV)