

LOC/DME I-JYV 109.7 Chan 34	APP CRS 267°	Rwy Idg TDZE 95 Apt Elev 96	9402
---	------------------------	---	-------------

ILS RWY 26L (SA CAT I)

GEORGE BUSH INTCNL/HOUSTON (IAH)

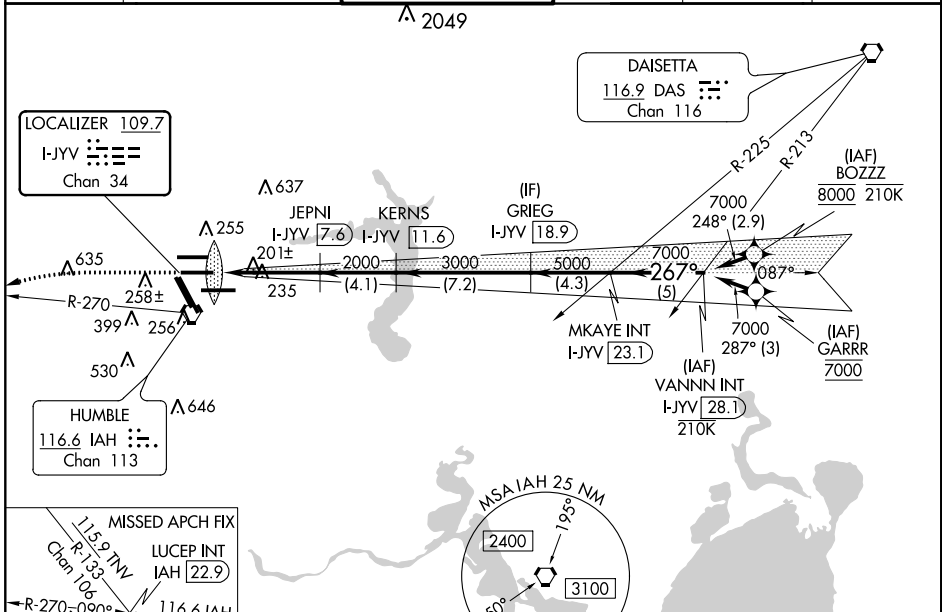
DME required. From BOZZZ, GARRR: RNAV 1-GPS required.

Simultaneous approach authorized with Rwy 26R and Rwy 27.
Requires specific OPSPEC, MSPEC, or LOA approval and use of HUD to DH.

ALSF-2

MISSED APPROACH: Climb to 3000 then left turn heading 240° and IAH VORTAC R-270 to LUCEP INT/IAH 22.9 DME and hold.

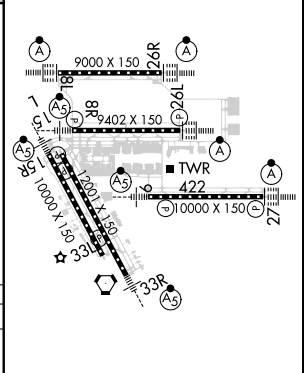
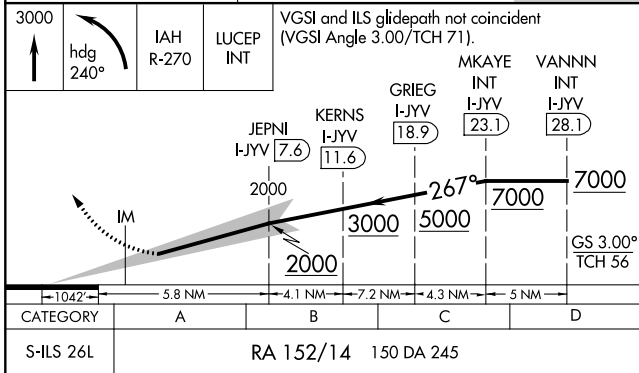
D-ATIS 124.05	HOUSTON APP CON 120.05 379.1 EAST 124.35 316.15 WEST	HOUSTON TOWER 125.35 290.2	GND CON 118.575	CLNC DEL 128.1	CPDLC
-------------------------	--	--------------------------------------	---------------------------	--------------------------	-------



SC-5, 19 MAY 2022 to 16 JUN 2022

SC-5, 19 MAY 2022 to 16 JUN 2022

ELEV 96	D TDZE 95
---------	------------------



SA CATEGORY I ILS - SPECIAL AIRCREW & AIRCRAFT CERTIFICATION REQUIRED

TDZ/CL Rwws 8R, 8L, 15R, 26R, 26L, 27 and 33L
HIRL all Rwws