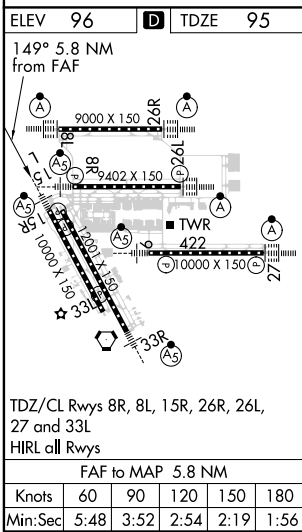
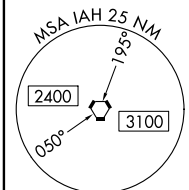
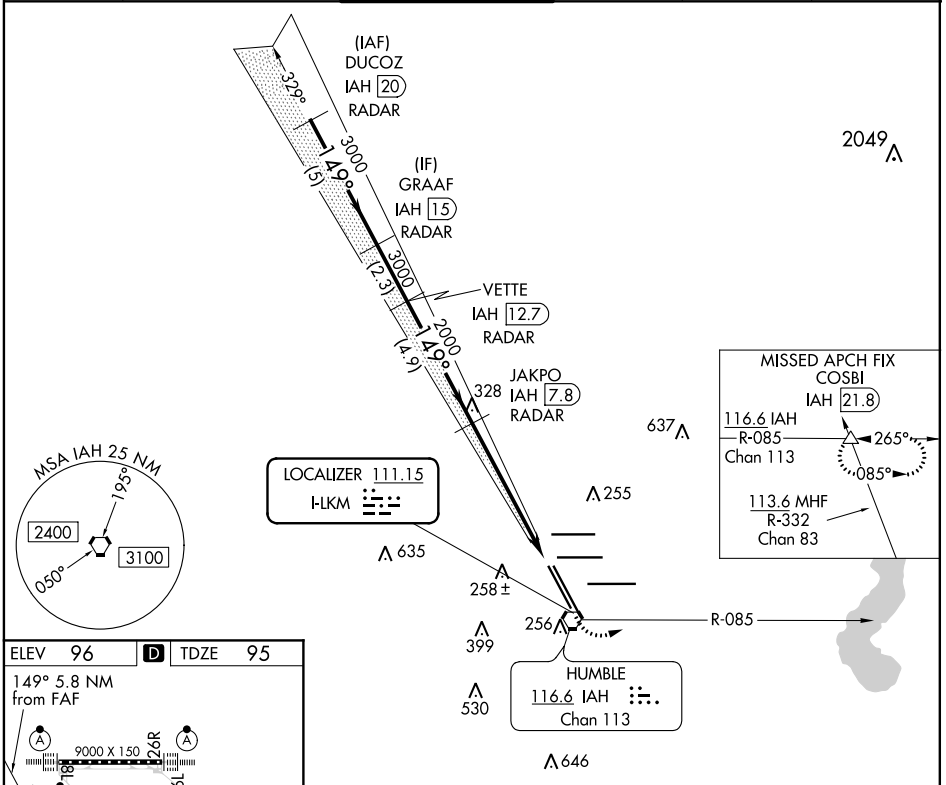


LOC I-LKM 111.15	APP CRS 149°	Rwy Idg 9999
		TDZE 95
		Apt Elev 96

ILS or LOC RWY 15R

GEORGE BUSH INTCNL/HOUSTON (IAH)

RADAR required for procedure entry. DME or RADAR required.		MALSR	MISSED APPROACH: Climb to 1000 then climbing left turn to 2000 on IAH VORTAC R-085 to COSBI INT/IAH 21.8 DME and hold.					
DME from IAH VORTAC. Simultaneous reception of I-LKM and IAH DME required. For inop ALS, increase S-ILS 15R Cat E visibility to RVR 4000, and S-LOC 15R Cat C/D/E visibility to 1 3/8 SM.			D-ATIS 124.05	HOUSTON APP CON 120.05 379.1 EAST 124.35 316.15 WEST	HOUSTON TOWER 127.3 288.25	GND CON 121.7	CLNC DEL 128.1	CPDLC



VGSi and ILS glidepath not coincident (VGSi Angle 3.00/TCH 71). DUCOZ IAH 20 RADAR GRAAF IAH 15 RADAR VETTE IAH 12.7 RADAR JAKPO IAH 7.8 RADAR COSBI IAH R-085 *LOC only.					
3000 GS 3.00° TCH 54	149° 3000 3000 2000 2000 2000	149° 2000 2000 2000 2000	3000 2000 2000 2000 2000	2000 2000 2000 2000 2000	2000 2000 2000 2000 2000
CATEGORY	A	B	C	D	E
S-ILS 15R	295/18 200 (200-1/2)				
S-LOC 15R	580/24	485 (500-1/2)	580/50	485 (500-1)	

SC-5, 19 MAY 2022 to 16 JUN 2022

SC-5, 19 MAY 2022 to 16 JUN 2022