

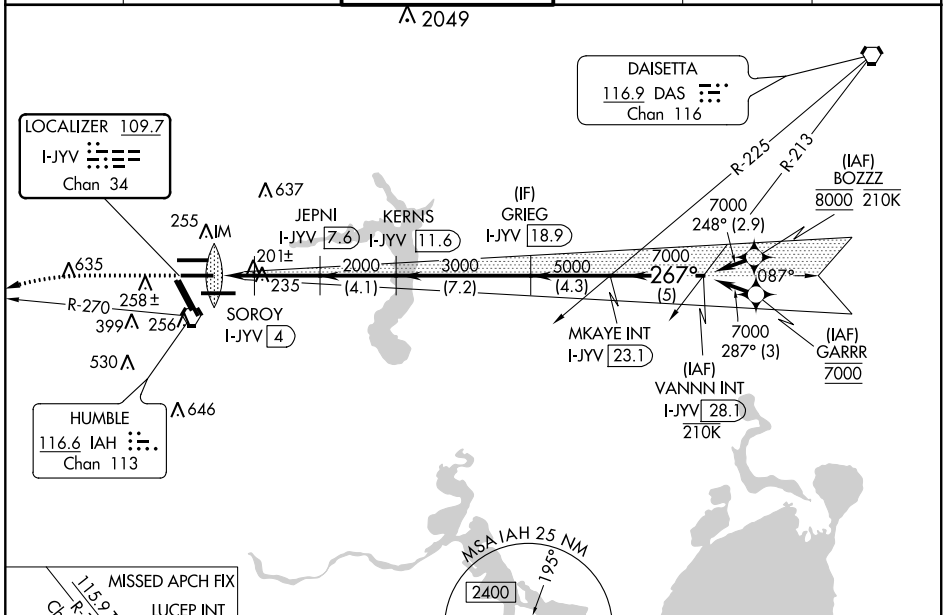
LOC/DME I-JYV 109.7 Chan 34	APP CRS 267°	Rwy Idg 9402 TDZE 95 Apt Elev 96
---	------------------------	---

ILS or LOC RWY 26L

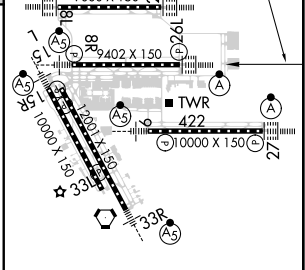
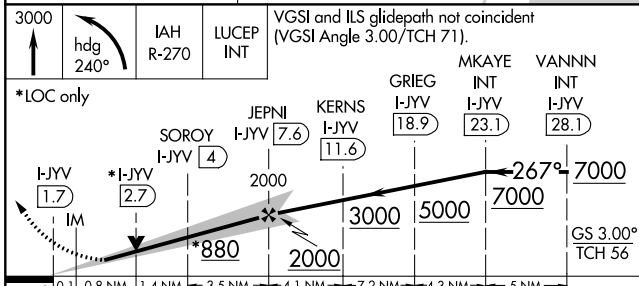
GEORGE BUSH INTCNL/HOUSTON (IAH)

DME required. From BOZZZ, GARRR: RNAV 1-GPS required.		ALSIF-2 	MISSED APPROACH: Climb to 3000 then left turn heading 240° and IAH VORTAC R-270 to LUCEP INT/IAH 22.9 DME and hold.
Simultaneous approach authorized with Rwy 26R and Rwy 27. For inop ALS, increase S-ILS 26L Cat E visibility to RVR 4000, S-LOC 26L Cat C/D/E visibility to RVR 5000.			

D-ATIS 124.05	HOUSTON APP CON 120.05 379.1 EAST 124.35 316.15 WEST	HOUSTON TOWER 125.35 290.2	GND CON 118.575	CLNC DEL 128.1	CPDLC
-------------------------	--	--------------------------------------	---------------------------	--------------------------	-------



ELEV 96	D TDZE 95
---------	------------------



CATEGORY	A	B	C	D	E																		
S-ILS 26L	295/18		200 (200-½)																				
S-LOC 26L	460/24	365 (400-½)	460/35	365 (400-¾)																			
<table border="1"> <tr> <td colspan="6">FAF to MAP 5.8 NM</td> </tr> <tr> <td>Knots</td> <td>60</td> <td>90</td> <td>120</td> <td>150</td> <td>180</td> </tr> <tr> <td>Min:Sec</td> <td>5:48</td> <td>3:52</td> <td>2:54</td> <td>2:19</td> <td>1:56</td> </tr> </table>						FAF to MAP 5.8 NM						Knots	60	90	120	150	180	Min:Sec	5:48	3:52	2:54	2:19	1:56
FAF to MAP 5.8 NM																							
Knots	60	90	120	150	180																		
Min:Sec	5:48	3:52	2:54	2:19	1:56																		

SC-5, 19 MAY 2022 to 16 JUN 2022

SC-5, 19 MAY 2022 to 16 JUN 2022