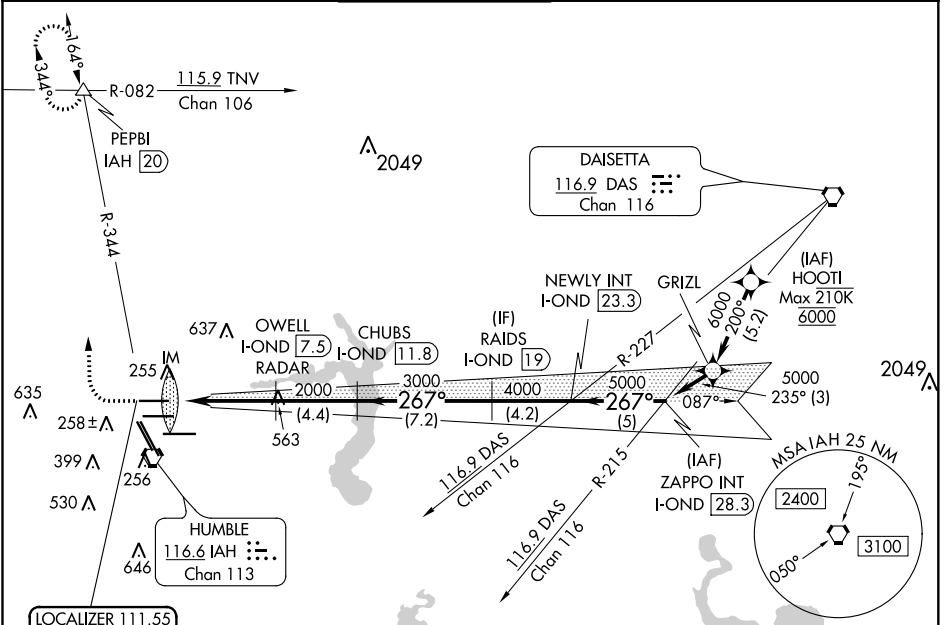


LOC/DME I-OND 111.55 Chan 52 (Y)	APP CRS 267°	Rwy Idg 9000 TDZE 95 Apt Elev 96
--	------------------------	---

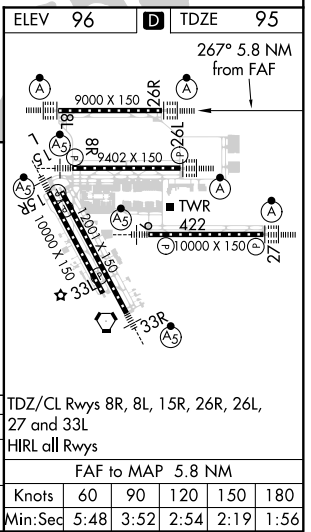
ILS or LOC RWY 26R

GEORGE BUSH INTCNL/HOUSTON (IAH)

DME required. From HOOTI: RNAV 1-GPS required.		ALSF-2 	MISSED APPROACH: Climb to 600 then climbing right turn to 3000 on IAH VORTAC R-344 to PEPBI INT/IAH 20 DME and hold.				
Simultaneous approach authorized with Rwy 26L and Rwy 27. For inop ALS, increase S-ILS 26R Cat E visibility to RVR 4000, and S-LOC 26R Cat C/D/E visibility to 1 1/8 SM.		D-ATIS 124.05	HOUSTON APP CON 120.05 379.1 EAST 124.35 316.15 WEST	HOUSTON TOWER 120.725 290.2	GND CON 118.575	CLNC DEL 128.1	CPDLC



ELEV 96	D TDZE 95						
600	3000	PEPBI	OWELL I-OND (7.5) RADAR	CHUBS I-OND (11.8)	RAIDS I-OND (19)	NEWLY INT I-OND (23.3)	ZAPPO INT I-OND (28.3)
		TDZ/CL Rws 8R, 8L, 15R, 26R, 26L, 27 and 33L HIRL all Rws FAF to MAP 5.8 NM Knots: 60, 90, 120, 150, 180 Min:Seq: 5:48, 3:52, 2:54, 2:19, 1:56					
* LOC only		CATEGORY: A, B, C, D, E S-ILS 26R: 295/18, 200 (200-1/2) S-LOC 26R: 580/24, 485 (500-1/2), 580/50, 485 (500-1)					



SC-5, 19 MAY 2022 to 16 JUN 2022

SC-5, 19 MAY 2022 to 16 JUN 2022