

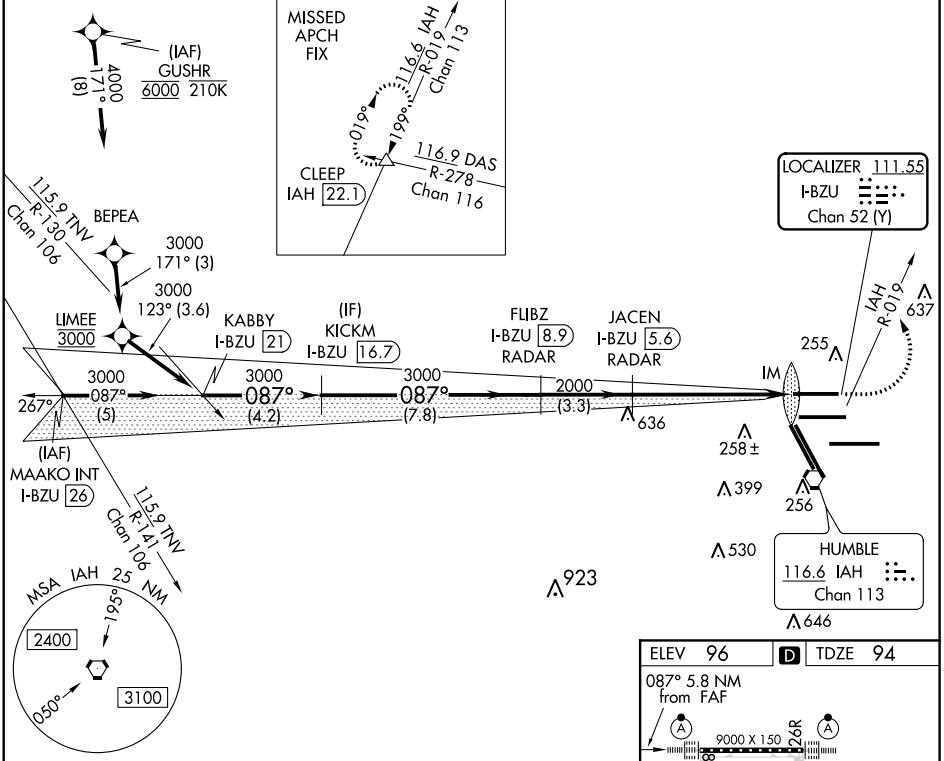
LOC/DME I-BZU <b>111.55</b> Chan 52 (Y)	APP CRS <b>087°</b>	Rwy Idg 9000 TDZE 94 Apt Elev 96
---	------------------------	---

# ILS or LOC RWY 8L

## GEORGE BUSH INTCNL/HOUSTON (IAH)

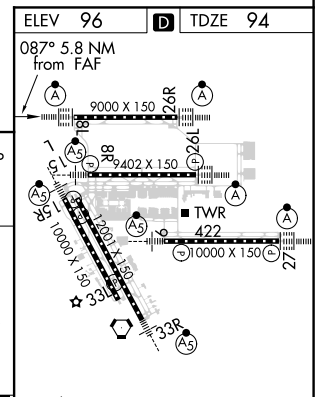
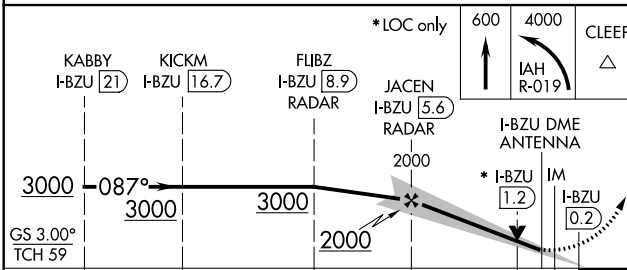
DME required. From GUSHR. RNAV 1-GPS required.			ALSF-2 A	MISSED APPROACH: Climb to 600 then climbing left turn to 4000 on IAH VORTAC R-019 to CLEEP INT/IAH 22.1 DME and hold.		
Simultaneous approach authorized with Rwy 8R and Rwy 9.						

ATIS <b>124.05</b>	HOUSTON APP CON <b>120.05 379.1</b> EAST <b>124.35 316.15</b> WEST	HOUSTON TOWER <b>120.725 290.2</b>	GND CON <b>118.575</b>	CLNC DEL <b>128.1</b>	CPDLC
-----------------------	--	---------------------------------------	---------------------------	--------------------------	-------



SC-5, 19 MAY 2022 to 16 JUN 2022

SC-5, 19 MAY 2022 to 16 JUN 2022



CATEGORY	A	B	C	D	E
S-ILS 8L	294/18		200 (200-½)		
S-LOC 8L	600/24	506 (600-½)	600/55	506 (600-1)	
TDZ/CL Rwys 8R, 8L, 15R, 26R, 26L, 27 and 33L HIRL all Rwys FAF to MAP 5.8 NM Knots: 60 90 120 150 180 Min:Sec: 5:48 3:52 2:54 2:19 1:56					

# ILS or LOC RWY 8L