

MMUGS FOUR DEPARTURE (RNAV)

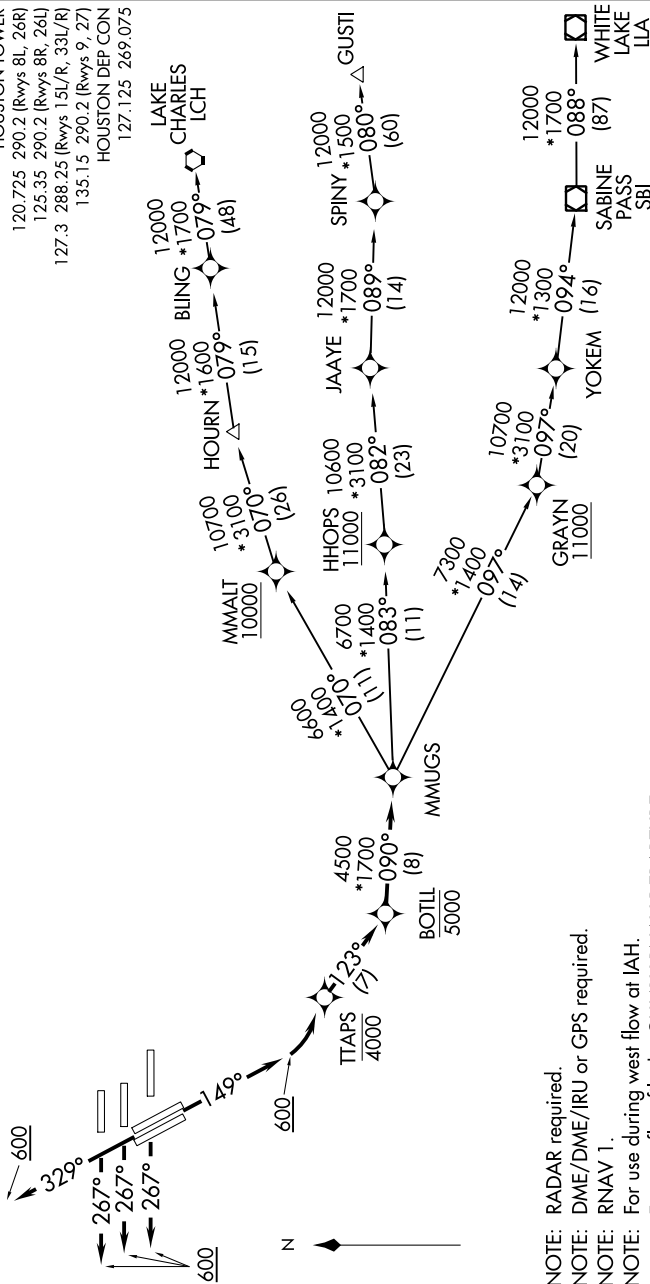
SC-5, 19 MAY 2022 to 16 JUN 2022

TOP ALTITUDE:  
16000

TAKEOFF MINIMUMS

Rwys 15L/R, 26L/R, 27, 33L/R: Standard  
with minimum climb of 500' per NM to 800.

D-ATIS 124.05  
CLINC DEL 128.1  
CPDLC 128.1  
GND CON 118.575 (Rwys 8L/R, 26L/R, 9, 27)  
121.7 (Rwys 15L/R, 33L/R)  
HOUSTON TOWER 120.725 290.2 (Rwys 8L, 26R)  
125.35 290.2 (Rwys 8R, 26L)  
127.3 288.25 (Rwys 15L/R, 33L/R)  
135.15 290.2 (Rwys 9, 27)  
HOUSTON DEP CON 127.125 269.075



NOTE: RADAR required.  
NOTE: DME/DME/IRU or GPS required.  
NOTE: RNAV 1.  
NOTE: For use during west flow at IAH.  
NOTE: For east flow file the GUMBY RNAV DEPARTURE.

(NARRATIVE ON FOLLOWING PAGE)

NOTE: Chart not to scale.

SC-5, 19 MAY 2022 to 16 JUN 2022