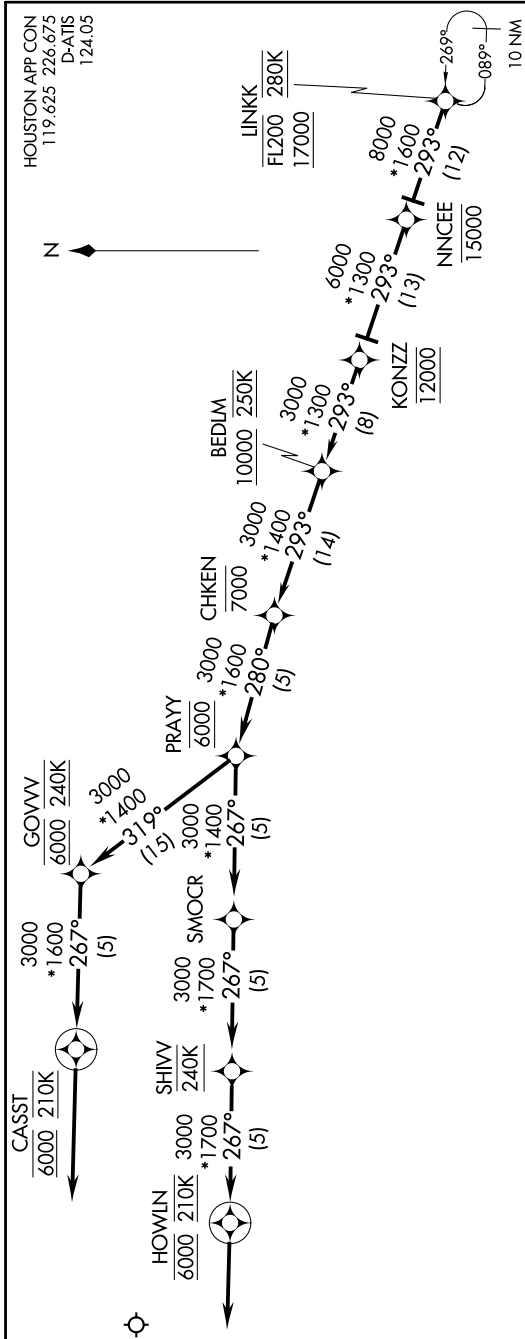


NNCEE ONE ARRIVAL (RNAV) Arrival Routes

SC-5, 19 MAY 2022 to 16 JUN 2022



ARRIVAL ROUTE DESCRIPTION

From LINKK on track 293° to cross NNCEE at or below 15000, then on track 293° to cross KONZZ at 12000, then on track 293° to cross BEDJM at or above 10000 and at 250K.

LANDING RUNWAY 8L: From BEDJM on track 293° to cross CHKEN at or below 7000, then on track 280° to cross PRAYY at 6000, then on track 319° to cross GOWV at 6000 and at 240K, then on track 267° to cross CASST at 6000 and at 210K, then on track 267°. Expect vectors to final approach course.

LANDING RUNWAYS 8R, 9: From BEDJM on track 293° to cross CHKEN at or below 7000, then on track 280° to cross PRAYY at 6000, then on track 267° to SMOCR, then on track 267° to SHIVY at 240K, then on track 267° to cross HOWLIN at 6000 and at 210K, then on track 267°. Expect vectors to final approach course.

- NOTE: RADAR Required.
- NOTE: RNAV 1.
- NOTE: DME/DME/IRU or GPS Required.
- NOTE: Turbojet and turboprop aircraft only.
- NOTE: Fly the Rwy 8R transition; Houston approach control may assign a different transition on initial contact.
- NOTE: Corresponding RNAV STAR is LINKK.
- NOTE: Expect LINKK when IAH is landing west.
- NOTE: Turbojet aircraft descend via match number until intercepting 280K. Maintain 280K until slowed by the STAR.
- NOTE: GPS Required for KEJPP, PEGLG and SEAGL transitions.

NOTE: Chart not to scale.

NNCEE ONE ARRIVAL (RNAV) Arrival Routes

SC-5, 19 MAY 2022 to 16 JUN 2022