

APP CRS	Rwy Idg	9000
267°	TDZE	96
	Apt Elev	96

RNAV (RNP) Y RWY 26R

GEORGE BUSH INTCNL/HOUSTON (IAH)

▼ For uncompensated Baro-VNAV systems, procedure NA below -3°C (27°F) or above 54°C (130°F). GPS required. Simultaneous approach authorized. For inop ALS, increase RNP 0.11 all Cats visibility to RVR 5000 and increase RNP 0.15 all Cats visibility to 1¼ SM. Use of FD or AP providing RNAV track guidance required during simultaneous operations.

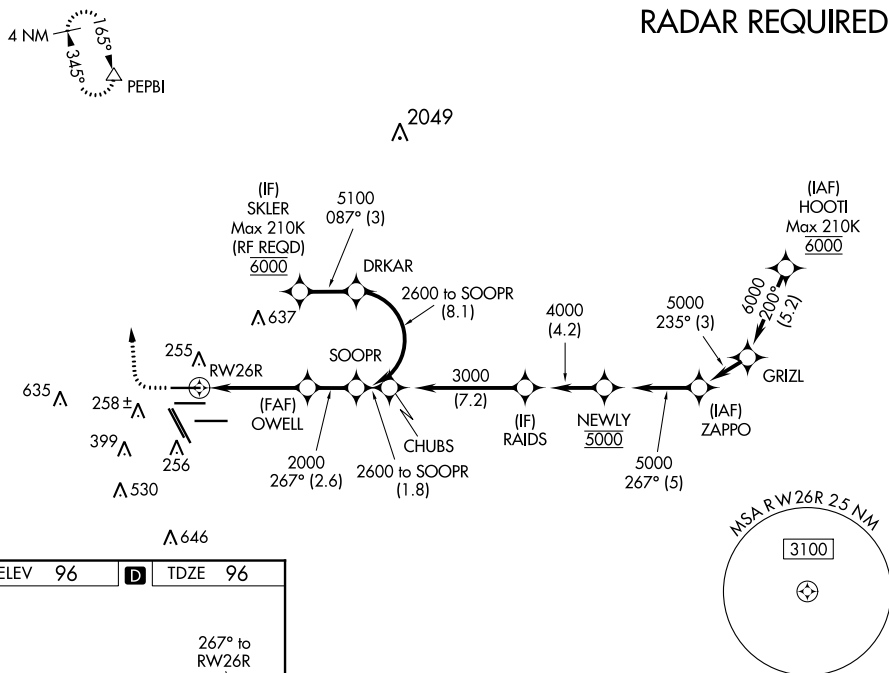
ALSF-2



MISSED APPROACH: Climb to 600 then climbing right turn to 3000 direct PEPBI and hold.

D-ATIS	HOUSTON APP CON	HOUSTON TOWER	GND CON	CLNC DEL	CPDLC
124.05	120.05 379.1 EAST 124.35 316.15 WEST	120.72 290.2	121.7	128.1	

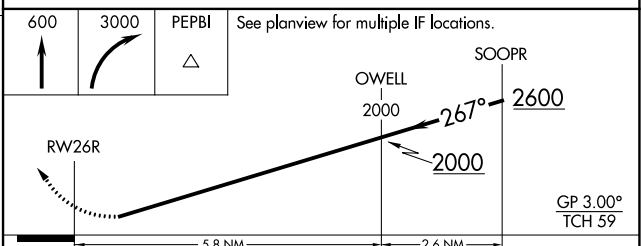
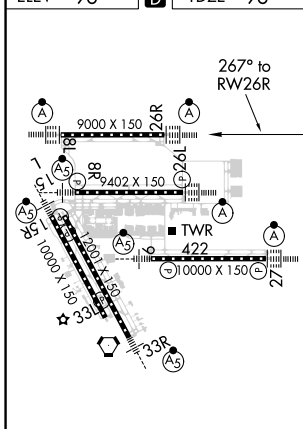
RADAR REQUIRED



SC-5, 19 MAY 2022 to 16 JUN 2022

SC-5, 19 MAY 2022 to 16 JUN 2022

ELEV	96	D	TDZE	96
------	----	----------	------	----



CATEGORY	A	B	C	D
RNP 0.11 DA		429/40	333 (400-¾)	
RNP 0.15 DA		496/45	400 (400-¾)	
RNP 0.30 DA		554/50	458 (500-1¼)	

TDZ/CL Rwy's 8R, 8L, 15R, 26R, 26L, 27 and 33L
HIRL all Rwy's

AUTHORIZATION REQUIRED