

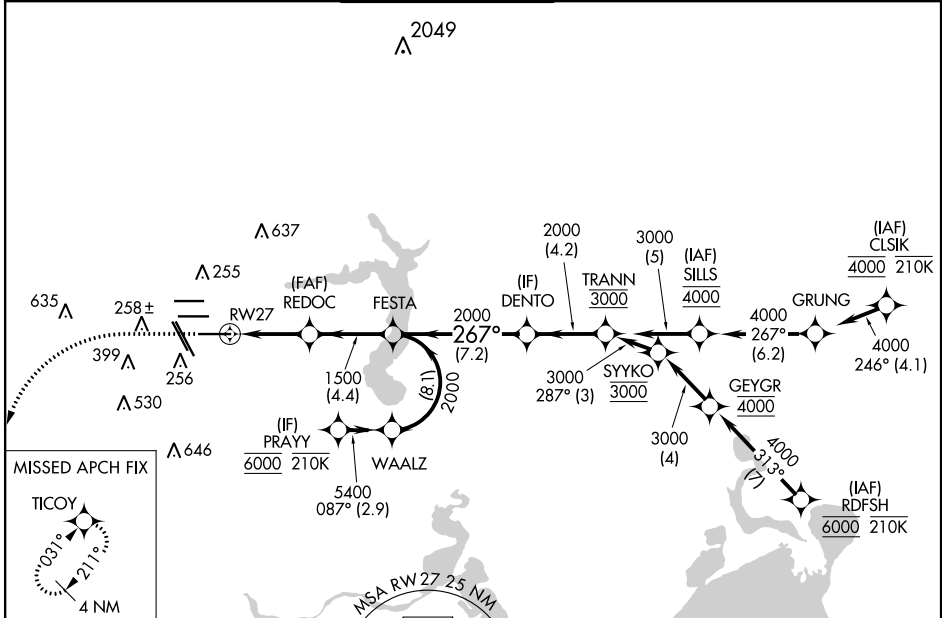
| | | |
|-------------|----------|--------------|
| APP CRS | Rwy Idg | 10000 |
| 267° | TDZE | 86 |
| | Apt Elev | 96 |

RNAV (RNP) Y RWY 27

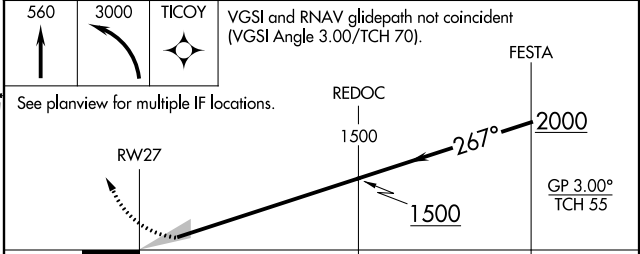
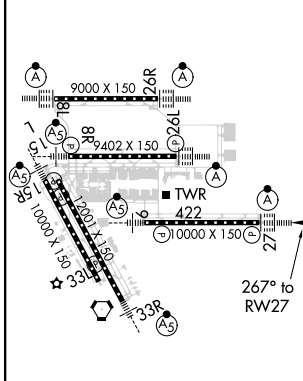
GEORGE BUSH INTCNL/HOUSTON (IAH)

| | | | | | |
|---|--|--------|--|--|--|
| RNP AR APCH - GPS. | | ALSf-2 | MISSED APPROACH: Climb to 560 then climbing left turn to 3000 direct TICOY and hold. | | |
| Simultaneous approach authorized. Use of FD or AP required during simultaneous operations. For uncompensated Baro-VNAV systems, procedure NA below -2°C or above 54°C. For inop ALS, increase RNP 0.30 all Cats visibility to RVR 4500. | | | | | |

| | | | | | |
|---------------|---|---------------------|----------------|--------------|-------|
| D-ATIS | HOUSTON APP CON | HOUSTON TOWER | GND CON | CLNC DEL | CPDLC |
| 124.05 | 120.05 379.1 EAST 124.35 316.15 WEST | 135.15 290.2 | 118.575 | 128.1 | |



| | | | | |
|------|-----------|----------|------|-----------|
| ELEV | 96 | D | TDZE | 86 |
|------|-----------|----------|------|-----------|



TDZ/CL Rwy's 8L, 8R, 15R, 26R, 26L, 27 and 33L
HIRL all Rwy's

| | | | | |
|-------------|---|--------|---------------|---|
| CATEGORY | A | B | C | D |
| RNP 0.30 DA | | 380/24 | 294 (300-1/2) | |

AUTHORIZATION REQUIRED

SC-5, 19 MAY 2022 to 16 JUN 2022

SC-5, 19 MAY 2022 to 16 JUN 2022