


WAAS CH 97726 W26A	APP CRS 267°	Rwy Idg TDZE Apt Elev	9000 96 96
--	------------------------	-----------------------------	---------------------------------------

RNAV (GPS) Z RWY 26R

GEORGE BUSH INTCNTL/HOUSTON (IAH)

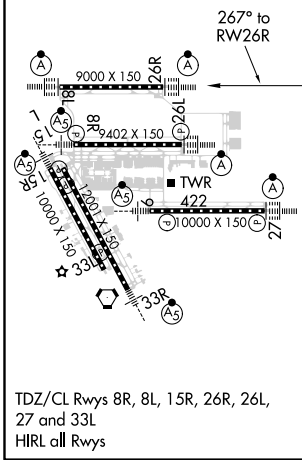
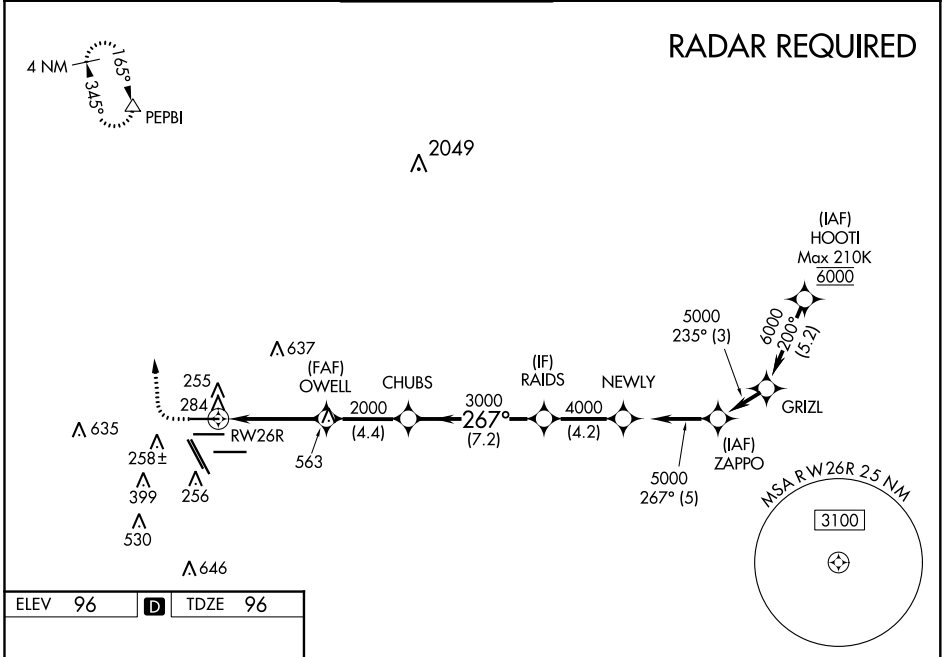
▼ For uncompensated Baro-VNAV systems, LNAV/VNAV NA below -3°C (27°F) or above 54°C (130°F). For inop ALSF, increase LPV Cat E visibility to RVR 4000, LNAV/VNAV all Cats visibility to 1¼, and LNAV Cat C/D/E visibility to 1¾. DME/DME RNP-0.3 NA. Simultaneous approach authorized with Rwy 26L and Rwy 27. LNAV procedure NA during simultaneous operations. Use of FD or AP providing RNAV track guidance required during simultaneous operations.

ALSF-2



MISSED APPROACH: Climb to 600 then climbing right turn to 3000 direct PEPBI and hold.

D-ATIS 124.05	HOUSTON APP CON 120.05 379.1 EAST 124.35 316.15 WEST	HOUSTON TOWER 120.72 290.2	GND CON 121.7	CLNC DEL 128.1	CPDLC
-------------------------	--	--------------------------------------	-------------------------	--------------------------	-------



600	3000	PEPBI				
↑	↷	△				
*LNAV only						
RW26R	OWELL	CHUBS	RAIDS	NEWLY	ZAPPO	
2000	2000	3000	4000	5000	5000	5000
*1.4 NM to RW26R						GP 3.00° TCH 59
1.4	4.4 NM	4.4 NM	7.2 NM	4.2 NM	5 NM	
CATEGORY	A	B	C	D	E	
LPV DA		296/18	200 (200-½)			
LNAV/VNAV DA		496/42	400 (400-¾)			
LNAV MDA	600/24	504 (600-½)		600/55	504 (600-1)	