

WAAS CH 77826 W08A	APP CRS 087°	Rwy Idg TDZE Apt Elev	9000 95 96
--	------------------------	-----------------------------	---------------------------------------

RNAV (GPS) Z RWY 8L

GEORGE BUSH INTCNL/HOUSTON (IAH)

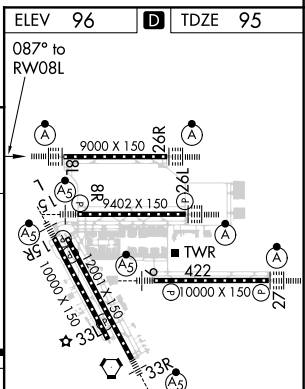
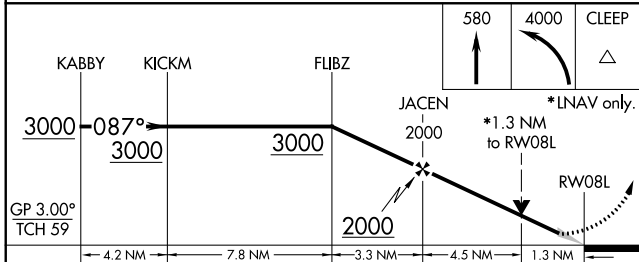
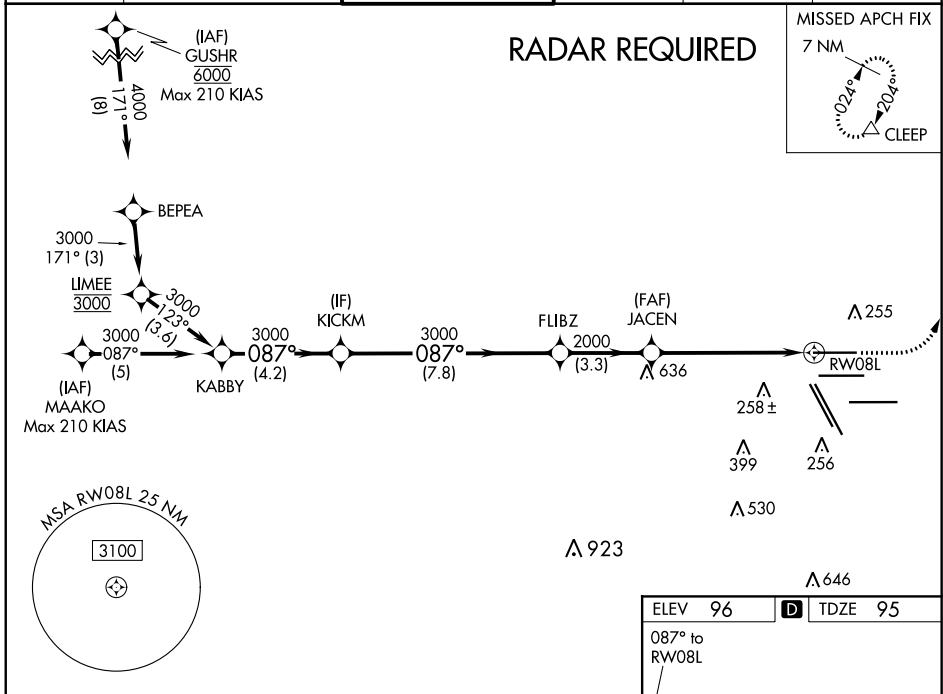
▼ For uncompensated Baro-VNAV systems, LNAV/VNAV NA below -3°C (27°F) or above 54°C (130°F). For inop ALSF, increase LPV Cat E visibility to RVR 4000, LNAV/VNAV Cat E visibility to 1¼, and LNAV Cat C/D/E visibility to 1¾. Simultaneous approach authorized with Rwy 8R and Rwy 9. DME/DME RNP-0.3 NA. Use of FD or AP providing RNAV track guidance required during simultaneous operations. LNAV procedure NA during simultaneous operations.

ALSF-2



MISSED APPROACH: Climb to 580 then climbing left turn to 4000 direct CLEEP and hold.

D-ATIS 124.05	HOUSTON APP CON 120.05 379.1 EAST 124.35 316.15 WEST	HOUSTON TOWER 120.72 290.2	GND CON 121.7	CLNC DEL 128.1	CPDLC
-------------------------	--	--------------------------------------	-------------------------	--------------------------	-------



CATEGORY	A	B	C	D	E
LPV DA	295/18		200 (200-½)		
LNAV/VNAV DA	486/40		391 (400-¾)		
LNAV MDA	580/24	485 (500-½)	580/50	485 (500-1)	

TDZ/CL Rwy 8R, 8L, 15R, 26R, 26L, 27 and 33L

HIRL all Rwy's

SC-5, 19 MAY 2022 to 16 JUN 2022

SC-5, 19 MAY 2022 to 16 JUN 2022