

TEJAS FOUR ARRIVAL (RNAV) Transition Routes

HOUSTON APP CON
119.175 291.675
D-ATIS
124.05

SAN ANTONIO
SAT

SMAKR

9000
*2900
089°
(76)

7000
*2000
095°
(63)

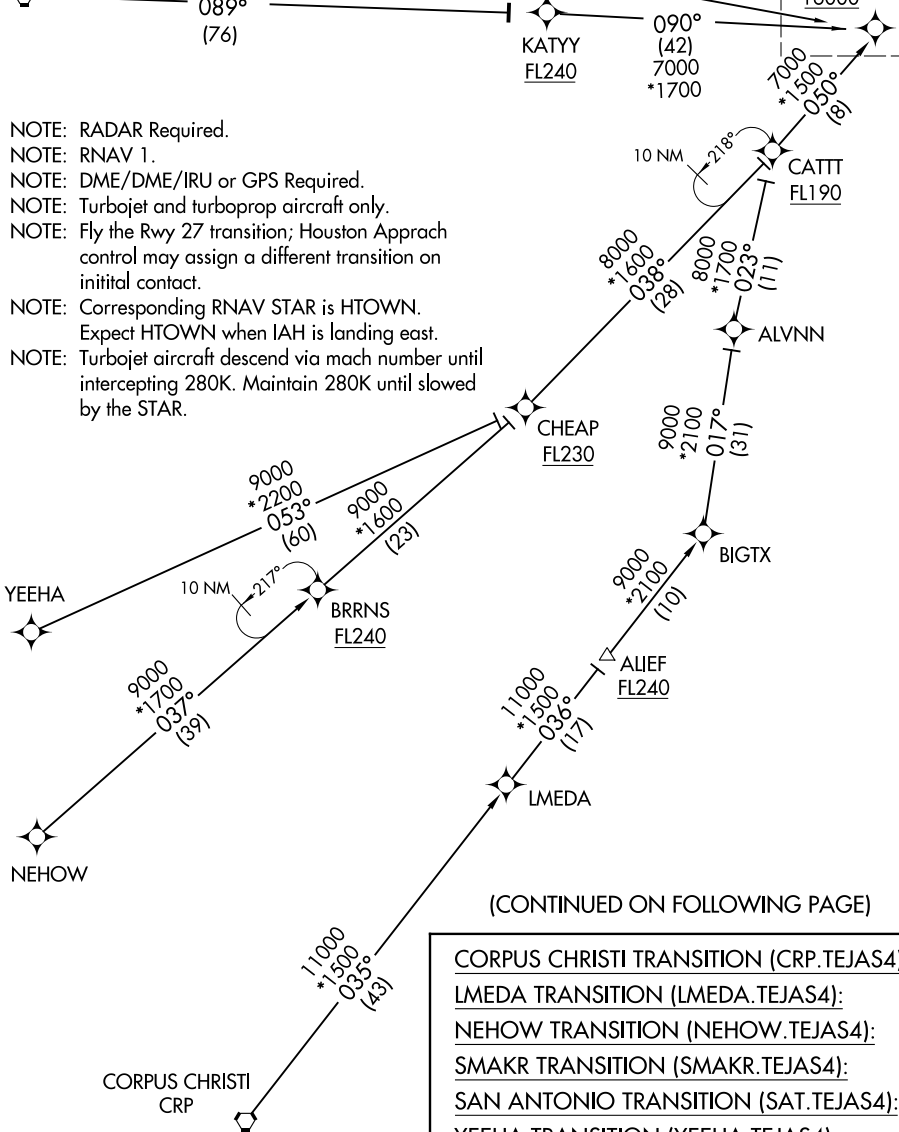
KATYY
FL240

090°
(42)
7000
*1700

See following page
for Arrival Routes.

GMANN
FL190 280K
16000

- NOTE: RADAR Required.
- NOTE: RNAV 1.
- NOTE: DME/DME/IRU or GPS Required.
- NOTE: Turbojet and turboprop aircraft only.
- NOTE: Fly the Rwy 27 transition; Houston Approach control may assign a different transition on initial contact.
- NOTE: Corresponding RNAV STAR is HTOWN. Expect HTOWN when IAH is landing east.
- NOTE: Turbojet aircraft descend via mach number until intercepting 280K. Maintain 280K until slowed by the STAR.



(CONTINUED ON FOLLOWING PAGE)

- CORPUS CHRISTI TRANSITION (CRP.TEJAS4):
- LMEDA TRANSITION (LMEDA.TEJAS4):
- NEHOW TRANSITION (NEHOW.TEJAS4):
- SMAKR TRANSITION (SMAKR.TEJAS4):
- SAN ANTONIO TRANSITION (SAT.TEJAS4):
- YEEHA TRANSITION (YEEHA.TEJAS4):

NOTE: Chart not to scale.