

TEJAS FOUR ARRIVAL (RNAV) Arrival Routes

SC-5, 19 MAY 2022 to 16 JUN 2022

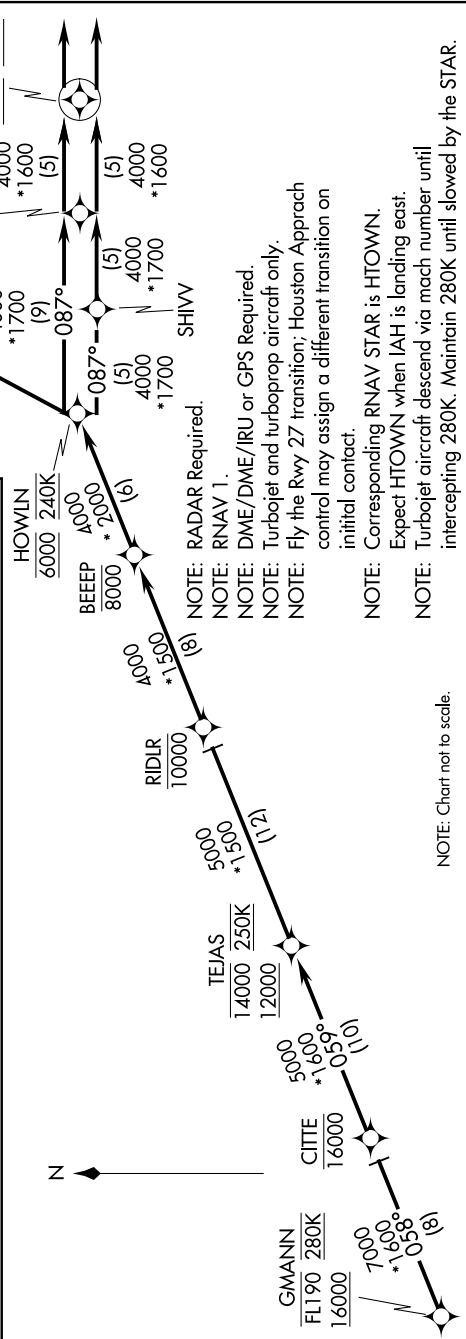
ARRIVAL ROUTE DESCRIPTION

From GMANN on track 058° to cross CITTE at or below 16000, then on track 059° to cross TEJAS at or above 12000, at or below 14000 and at 250K.

**LANDING RUNWAY 26L:** From TEJAS on track 059° to cross RIDLR at or below 10000, then on track 059° to cross BEEEP at or below 8000, then on track 059° to cross HOWLIN at 6000 and at 240K, then on track 087° to SMOCR, then on track 087° to cross PRAYY at 6000 and at 210K, then on track 087°. Expect vectors to final approach course.

**LANDING RUNWAY 26R:** From TEJAS on track 059° to cross RIDLR at or below 10000, then on track 059° to cross BEEEP at or below 8000, then on track 059° to cross HOWLIN at 6000 and at 240K, then on track 034° to ZOEEEE, then on track 087° to cross SKLER at 6000 and at 210K, then on track 087°. Expect vectors to final approach course.

**LANDING RUNWAY 27:** From TEJAS on track 059° to cross RIDLR at or below 10000, then on track 059° to cross BEEEP at or below 8000, then on track 059° to cross HOWLIN at 6000 and at 240K, then on track 087° to SHIVV, then on track 087° to SMOCR, then on track 087° to cross PRAYY at 6000 and at 210K, then on track 087°. Expect vectors to final approach course.



NOTE: Chart not to scale.

TEJAS FOUR ARRIVAL (RNAV) Arrival Routes

SC-5, 19 MAY 2022 to 16 JUN 2022