

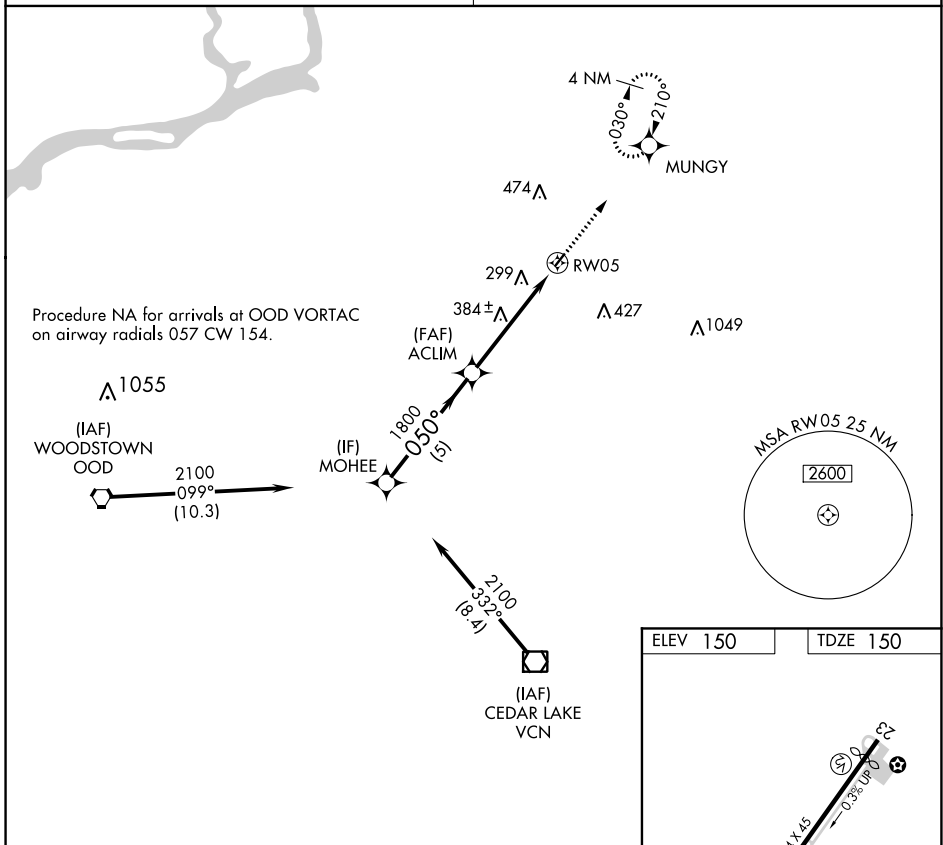
APP CRS	Rwy Idg	2354
050°	TDZE	150
	Apt Elev	150

RNAV (GPS) RWY 5

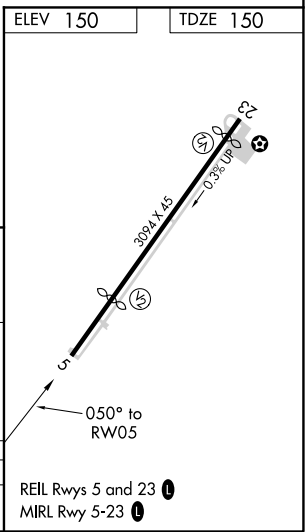
CAMDEN COUNTY (19N)

RNP APCH.	MISSED APPROACH: Climb to 2000 direct MUNGUY and hold.
<p>▼ Rwy 5 helicopter visibility reduction below 1 SM NA.</p> <p>▲ NA Procedure NA at night. Use Mount Holly altimeter setting; when not received use Philadelphia Intl altimeter setting and increase all MDA 20 feet.</p>	

MC GUIRE APP CON 126.475 363.8	UNICOM 123.0 (CTAF)
--	-------------------------------



MOHEE	Visual Segment - Obstacles.		2000	MUNGUY
2100	050°	ACCLIM	1800	RW05
5 NM		5 NM		
CATEGORY	A	B	C	D
LNAV MDA	740-1	590 (600-1)	NA	



NE-2, 19 MAY 2022 to 16 JUN 2022

NE-2, 19 MAY 2022 to 16 JUN 2022