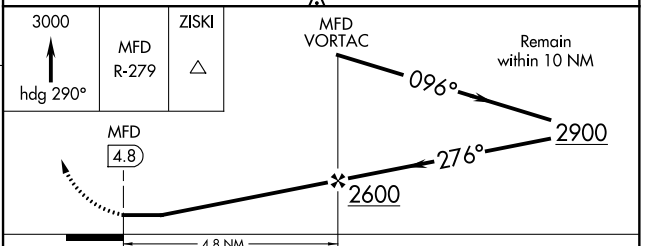
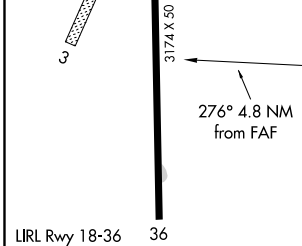
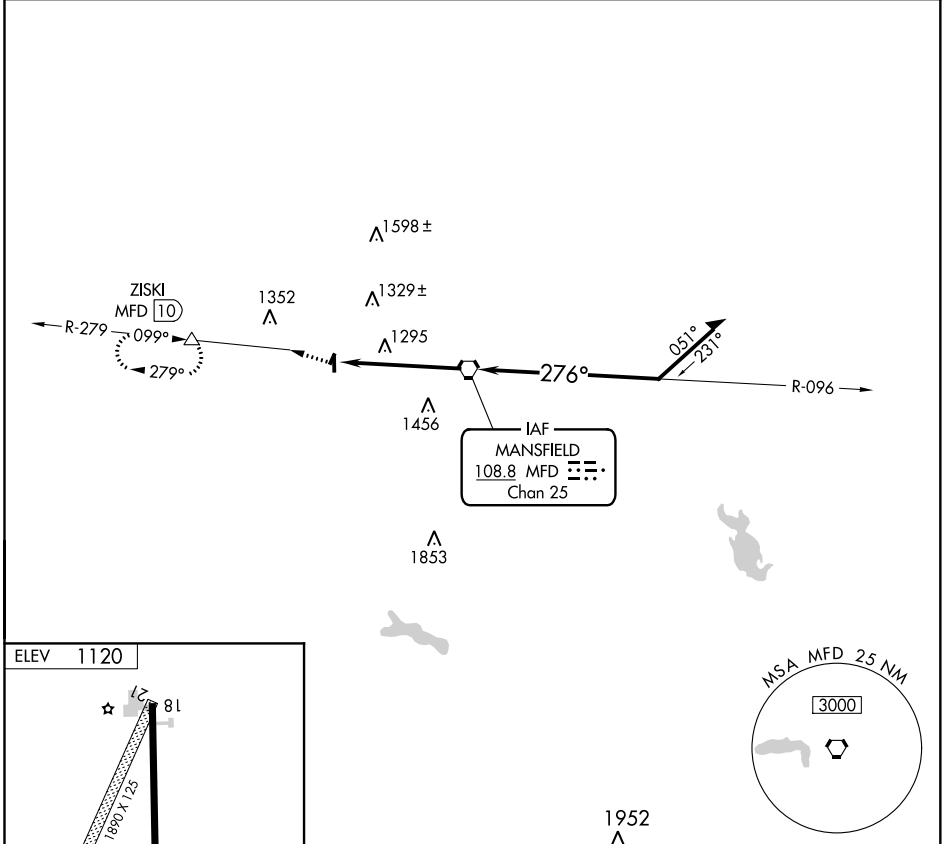


VORTAC MFD 108.8 Chan 25	APP CRS 276°	Rwy Idg TDZE Apt Elev	N/A N/A 1120
---------------------------------------	------------------------	-----------------------------	---

VOR-A
SHELBY COMMUNITY (12G)

DME required.	MISSED APPROACH: Climb to 3000 via heading 290° and MFD R-279 to ZISKI Int/MFD 10 DME and hold.
▼ Use Mansfield altimeter setting. Procedure NA at night. ▲ NA Circling to Rwy 3, 21 NA.	

CLEVELAND APP CON ★ 124.2 360.65	UNICOM 122.8 (CTAF)
--	-------------------------------



FAF to MAP 4.8 NM					
Knots	60	90	120	150	180
Min:Sec	4:48	3:12	2:24	1:55	1:36

CATEGORY	A	B	C	D
CIRCLING	1640-1 520 (600-1)	1700-1 580 (600-1)	1840-2 720 (800-2)	NA

EC-2, 19 MAY 2022 to 16 JUN 2022

EC-2, 19 MAY 2022 to 16 JUN 2022