

LOC I-UCY <b>109.7</b>	APP CRS <b>006°</b>	Rwy Idg <b>6503</b> TDZE <b>346</b> Apt Elev <b>346</b>
---------------------------	------------------------	---

# ILS or LOC RWY 1

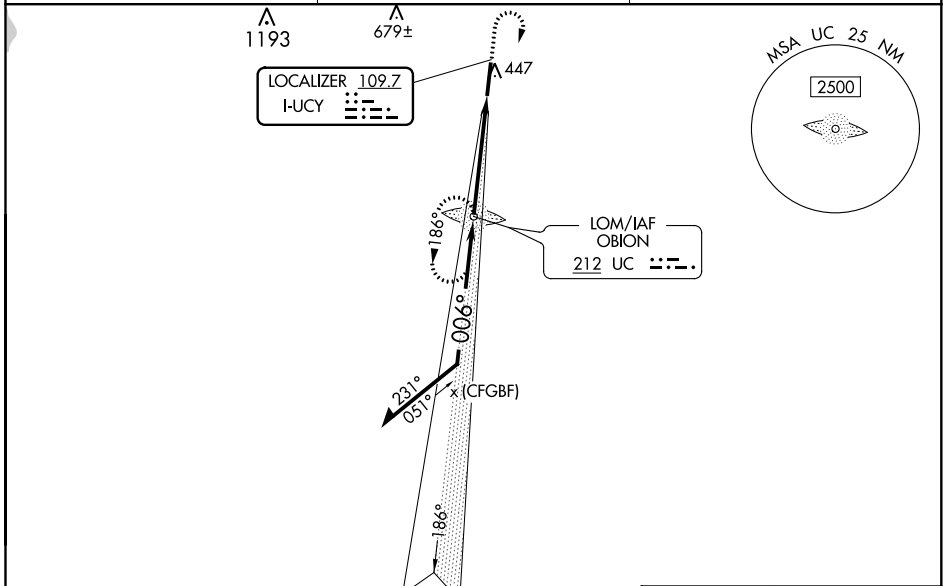
EVERETT-STEWART RGNL (UCY)

**ADF required.** When local altimeter setting not received, use Dyersburg altimeter setting and increase all DA 72 feet and all MDA 80 feet, increase S-LOC 1 Cat C/D visibility to 1 3/4 mile, Circling Cat C visibility to 1 3/4 mile and Circling Cat D visibility to 2 1/2 mile. Inop table does not apply to S-ILS 1. For inop ODALS, increase S-LOC 1 Cat C/D visibility to 1 3/4 mile. For inop ODALS when using Dyersburg altimeter setting, increase S-ILS 1 all Cats visibility to 3/4 mile and S-LOC 1 Cat D visibility to 1 3/4 mile.

**ODALS**

**MISSED APPROACH:**  
Climb to 1300 then climbing right turn to 2500 direct OBION LOM and hold.

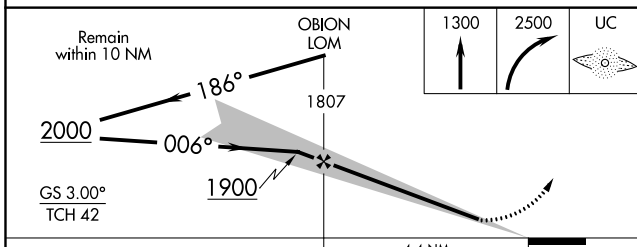
AWOS-3 <b>135,325</b>	MEMPHIS CENTER <b>133.65 292.15</b>	UNICOM <b>122.7 (CTAF)</b>
--------------------------	--	-------------------------------



SE-1, 19 MAY 2022 to 16 JUN 2022

SE-1, 19 MAY 2022 to 16 JUN 2022

## ADF and RADAR REQUIRED



ELEV 346	TDZE 346
MIRL Rwy 1-19	61
REIL Rwy 1 and 19	

FAF to MAP 4.4 NM					
Knots	60	90	120	150	180
Min:Sec	4:24	2:56	2:12	1:46	1:28

CATEGORY	A	B	C	D
S-ILS 1	546-3/4 200 (200-3/4)			
S-LOC 1	820-3/4	474 (500-3/4)	820-1 1/4	474 (500-1 1/4)
<b>C</b> CIRCLING	820-1	474 (500-1)	820-1 1/2	1020-2 1/4 474 (500-1 1/2) 674 (700-2 1/4)