

|  |                        |   |
|--|------------------------|---|
| WAAS<br>CH <b>90308</b><br><b>W34A</b> | APP CRS<br><b>341°</b> | Rwy ldg <b>4002</b><br>TDZE <b>168</b><br>Apt Elev <b>168</b> |
|--|------------------------|---|

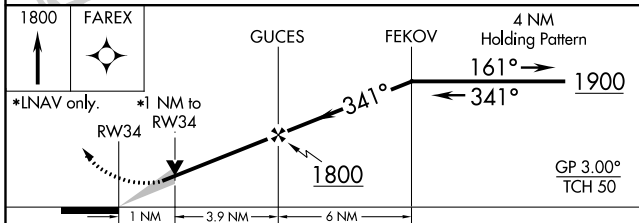
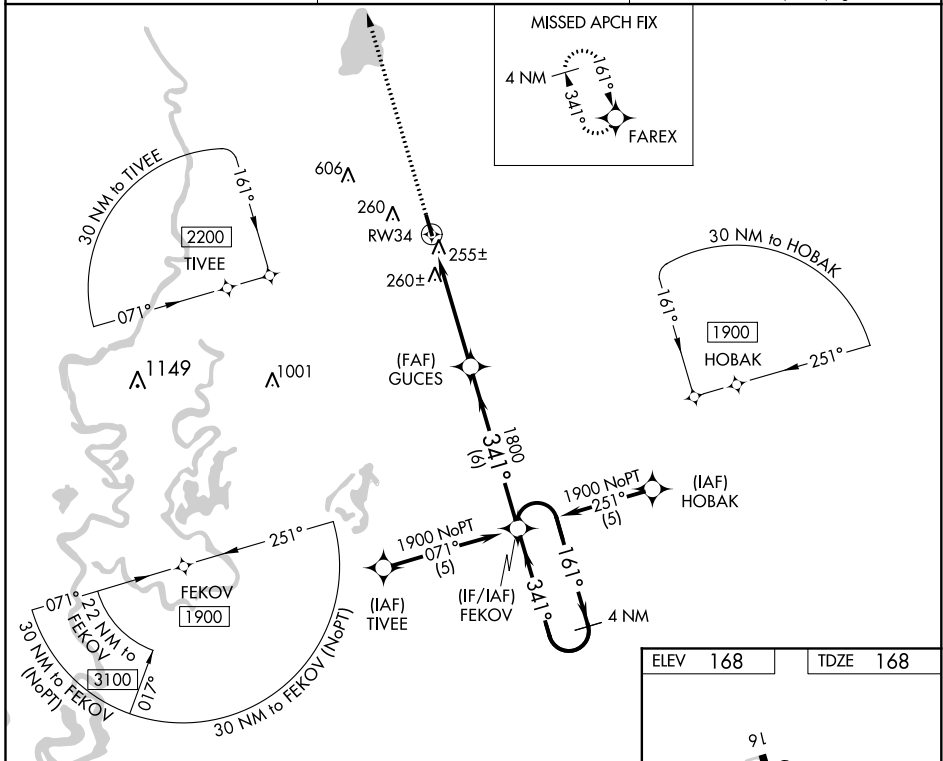
# RNAV (GPS) RWY 34

MOREHOUSE MEMORIAL (BQP)

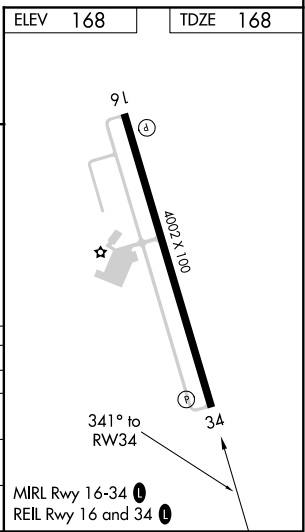
**⚠** Baro-VNAV NA when using Monroe altimeter setting. For uncompensated Baro-VNAV systems, LNAV/VNAV NA below -15°C (5°F) or above 54°C (130°F). DME/DME RNP-0.3 NA. VDP NA when using Monroe altimeter setting. When local altimeter setting not received, use Monroe altimeter setting and increase LPV DA to 559, LNAV/VNAV DA to 602 and all MDA 60 feet; increase LNAV Cat C visibility 1/8 SM and Circling Cat C visibility 1/4 SM.

**MISSED APPROACH:**  
Climb to 1800 direct FAREX and hold.

|                            |  |                                 |
|----------------------------|--|---------------------------------|
| AWOS-3PT<br><b>118.375</b> | MONROE APP CON ★<br><b>126.9 307.9</b> | UNICOM<br><b>122.8 (CTAF) 0</b> |
|----------------------------|--|---------------------------------|



| CATEGORY     | A                    | B                    | C                      | D  |
|--------------|----------------------|----------------------|------------------------|----|
| LPV DA       | 508-1¼               | 340 (400-1¼)         |                        | NA |
| LNAV/VNAV DA | 551-1¼               | 383 (400-1¼)         |                        | NA |
| LNAV MDA     | 520-1                | 352 (400-1)          |                        | NA |
| CIRCLING     | 560-1<br>392 (400-1) | 780-1<br>612 (700-1) | 820-1¾<br>652 (700-1¾) | NA |



SC-4, 19 MAY 2022 to 16 JUN 2022

SC-4, 19 MAY 2022 to 16 JUN 2022