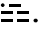
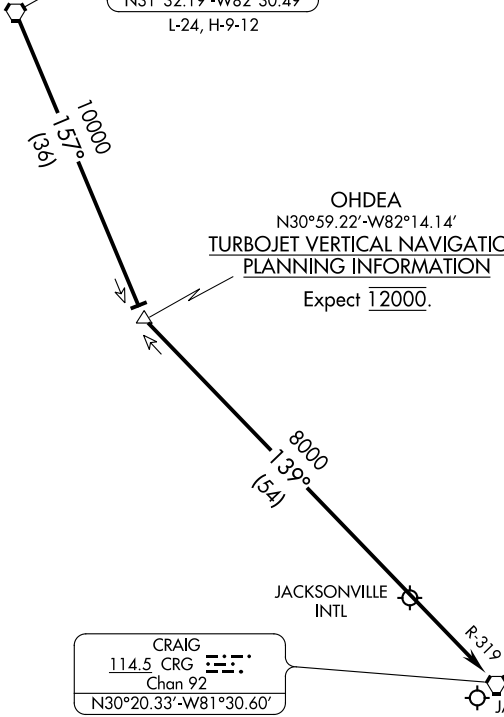



JACKSONVILLE APP CON  
 127.0 269.9  
 CRG ATIS  
 125.4  
 JAX D-ATIS  
 125.85  
 KNIP ATIS  
 290.425  
 KNRB ATIS ★  
 236.775  
 VQQ ATIS  
 125.275

ALMA  
 115.1 AMG   
 Chan 98  
 N31°32.19'-W82°30.49'  
 L-24, H-9-12

OHDEA  
 N30°59.22'-W82°14.14'  
 TURBOJET VERTICAL NAVIGATION  
 PLANNING INFORMATION

Expect 12000.



CRAIG  
 114.5 CRG   
 Chan 92  
 N30°20.33'-W81°30.60'

JACKSONVILLE INTL  
 JACKSONVILLE NAS (TOWERS FLD)  
 JACKSONVILLE EXEC AT CRAIG  
 MAYPORT NS (ADM DAVID L MCDONALD FLD)  
 CECIL

SE-3, 19 MAY 2022 to 16 JUN 2022

SE-3, 19 MAY 2022 to 16 JUN 2022

NOTE: DME required.

NOTE: Chart not to scale.

ARRIVAL DESCRIPTION

From over ALMA VORTAC via AMG R-157 to OHDEA INT, then via CRG R-319 to CRG VORTAC. Expect radar vectors to final approach course.