

WAAS CH <b>90137</b> <b>W16B</b>	APP CRS <b>148°</b>	Rwy Idg TDZE Apt Elev	<b>5201</b> <b>3432</b> <b>3460</b>
----------------------------------------	------------------------	-----------------------------	-------------------------------------------

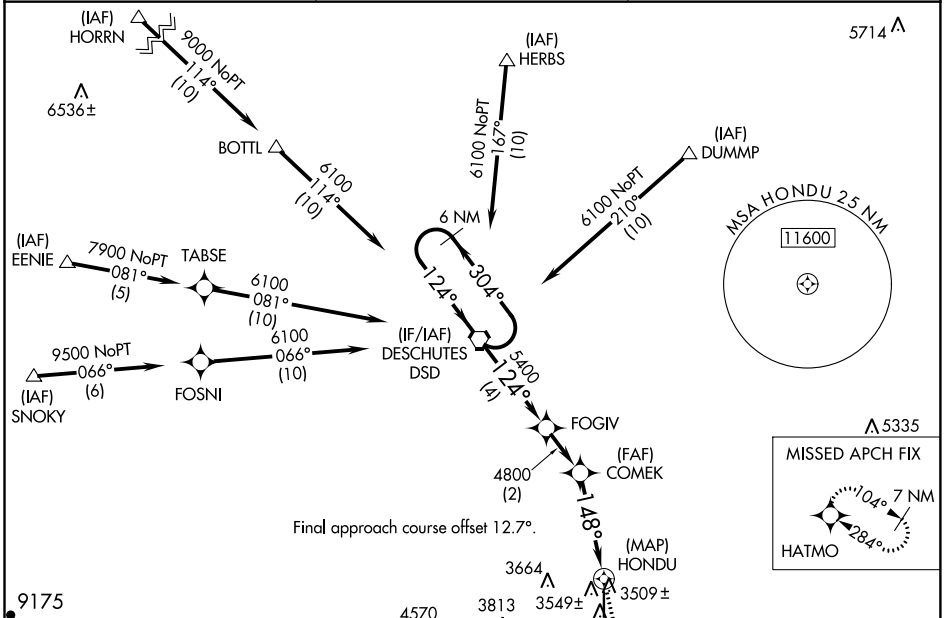
# RNAV (GPS) Y RWY 16

BEND MUNI (BDN)

**⚠** DME/DME RNP -0.3 NA. When local altimeter setting not received, use Redmond altimeter setting and increase all MDA 80 feet, and LP and LNAV Cats C/D visibility ¼ mile, and Circling Cat C visibility ½ mile. Helicopter visibility reduction below 1 SM NA. Night landing: Rwy 16 NA.

MISSED APPROACH: Climb to 7600 direct HITUP and on track 066° to WOTLO and on track 016° to HATMO and hold, continue climb-in-hold to 7600.

AWOS-3 <b>134.425</b>	SEATTLE CENTER <b>126.15 269.475</b>	UNICOM <b>123.0 (CTAF) 0</b>
--------------------------	-----------------------------------------	---------------------------------

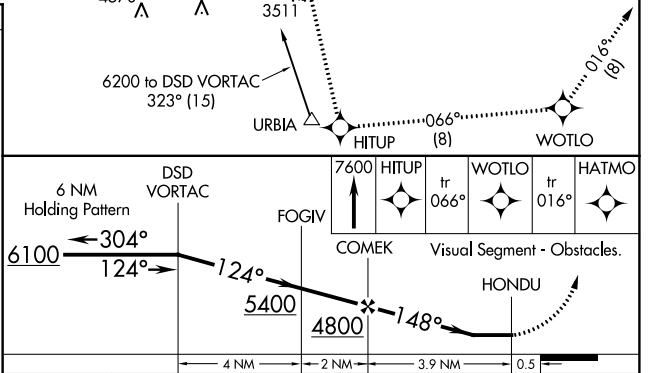


NW-1, 19 MAY 2022 to 16 JUN 2022

NW-1, 19 MAY 2022 to 16 JUN 2022

ELEV 3460	TDZE 3432
-----------	-----------

REIL Rws 16 and 34 **0**  
MIRL Rwy 16-34 **0**



CATEGORY	A	B	C	D
LP MDA	3760-1 328 (300-1)			
LNAV MDA	3800-1	368 (400-1)	3800-1½	368 (400-1½)
<b>C</b> CIRCLING	3940-1 480 (500-1)	4000-1 540 (600-1)	4120-1¾ 660 (700-1¾)	4640-3 1180 (1200-3)