

|   |                        |   |
|---|------------------------|---|
| VORTAC DSD<br><b>117.6</b><br>Chan <b>123</b> | APP CRS<br><b>136°</b> | Rwy Idg<br>TDZE <b>3432</b><br>Apt Elev <b>3460</b> |
|---|------------------------|---|

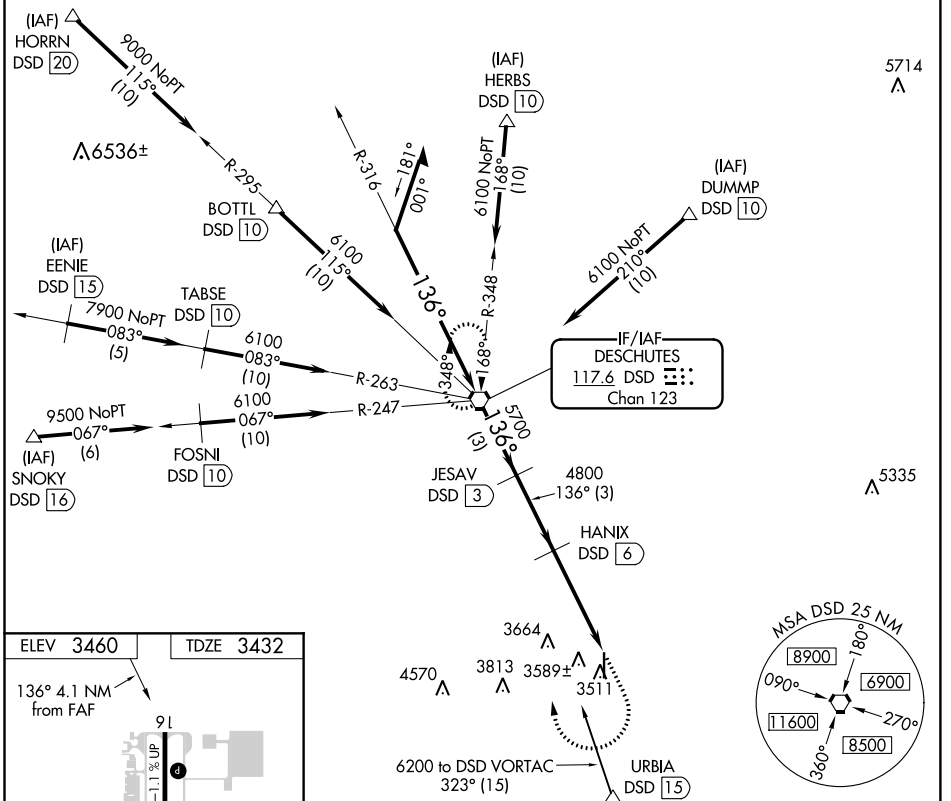
# VOR/DME RWY 16

BEND MUNI (BDN)

**⚠** When local altimeter setting not received, use Redmond altimeter setting and increase all MDAs 80 feet, increase S-16 Cat C/D visibility 1/8 mile, and Circling Cat C visibility 1/4 mile. Helicopter visibility reduction below 1 SM NA. Night landing: Rwy 16 NA.

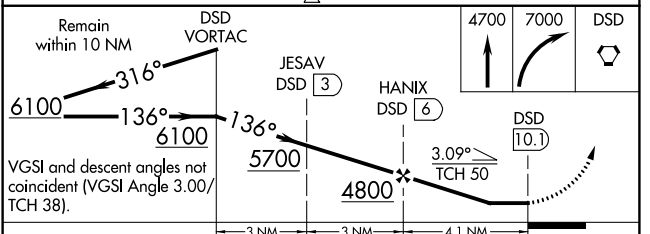
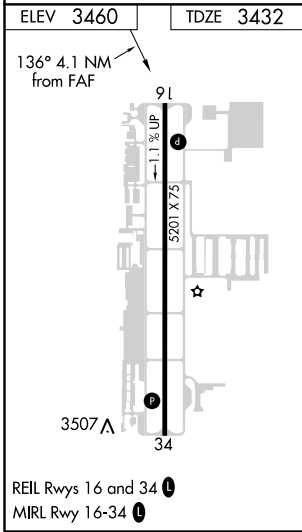
**MISSED APPROACH:** Climb to 4700 then climbing right turn to 7000 direct DSD VORTAC and hold.

|                          |   |                               |
|--------------------------|---|-------------------------------|
| AWOS-3<br><b>134.425</b> | SEATTLE CENTER<br><b>126.15 269.475</b> | UNICOM<br><b>123.0 (CTAF)</b> |
|--------------------------|---|-------------------------------|



NW-1, 19 MAY 2022 to 16 JUN 2022

NW-1, 19 MAY 2022 to 16 JUN 2022



| CATEGORY          | A                     | B                     | C                       | D                       |
|-------------------|-----------------------|-----------------------|-------------------------|-------------------------|
| S-16              | 3840-1                | 408 (400-1)           | 3840-1¼                 | 408 (400-1¼)            |
| <b>C</b> CIRCLING | 3940-1<br>480 (500-1) | 4000-1<br>540 (600-1) | 4120-1¾<br>660 (700-1¾) | 4640-3<br>1180 (1200-3) |