

VOR RAL <b>112.4</b>	APP CRS <b>264°</b>	Rwy Idg <b>4858</b>
		TDZE <b>636</b>
		Apt Elev <b>650</b>

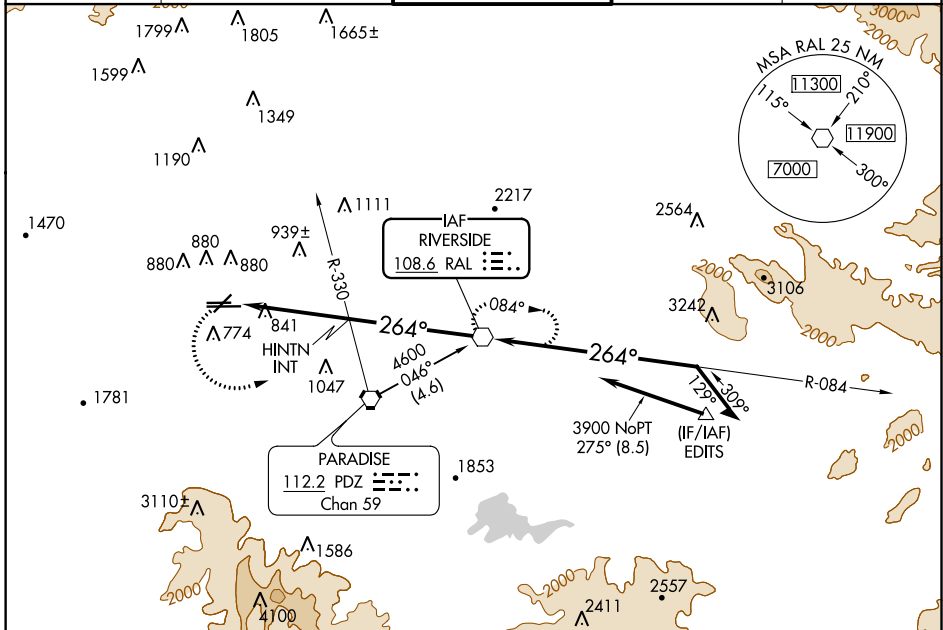
# VOR RWY 26R

CHINO (CNO)

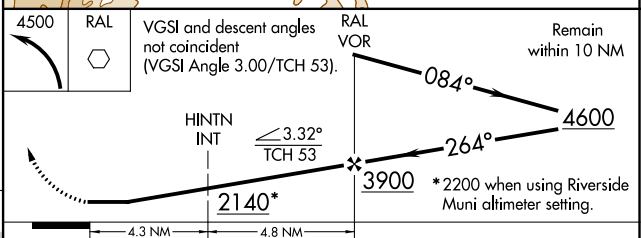
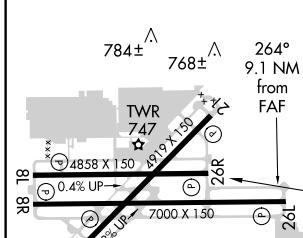
**NA** Rwy 26R helicopter visibility reduction below ¾ SM NA.  
When local altimeter setting not received, use Ontario altimeter setting and increase all MDAs 60 feet; increase HINTN FIX minimums visibility S-26R and Circling Cat B, C, and D ¼ SM.

MISSED APPROACH: Climbing left turn to 4500 direct RAL VOR and hold, continue climb-in-hold to 4500.

ATIS <b>125.85</b>	SOCAL APP CON <b>135.4 318.2</b>	CHINO TOWER ★ <b>118.5 (CTAF)</b>	GND CON <b>121.6</b>	UNICOM <b>122.95</b>
-----------------------	-------------------------------------	--------------------------------------	-------------------------	-------------------------



ELEV 650	TDZE 636
----------	----------



CATEGORY	A	B	C	D
S-26R	2140-1¼ 1504 (1500-1¼)	2140-1½ 1504 (1500-1½)	2140-3	1504 (1500-3)
CIRCLING	2140-1¼ 1490 (1500-1¼)	2140-1½ 1490 (1500-1½)	2140-3	1490 (1500-3)
HINTN FIX MINIMUMS				
S-26R	1320-1	684 (700-1)	1320-2 684 (700-2)	1320-2¼ 684 (700-2¼)
CIRCLING	1320-1	670 (700-1)	1320-2 670 (700-2)	1340-2¼ 690 (700-2¼)

SW-3, 19 MAY 2022 to 16 JUN 2022

SW-3, 19 MAY 2022 to 16 JUN 2022