

WAAS CH <b>56522</b> <b>W19A</b>	APP CRS <b>190°</b>	Rwy Idg TDZE Apt Elev	<b>5001</b> <b>1245</b> <b>1255</b>
----------------------------------------	------------------------	-----------------------------	-------------------------------------------

# RNAV (GPS) RWY 19

NEOSHO HUGH ROBINSON (E.OS)

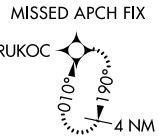
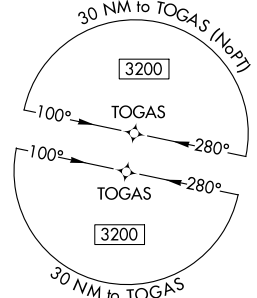
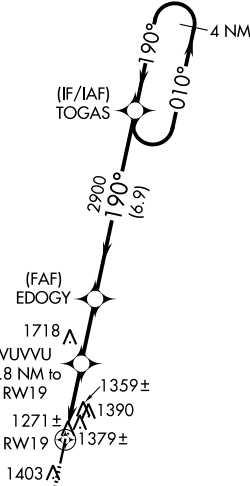
**⚠** When VGSI inop, Circling Rwy 1 NA at night. For uncompensated Baro-VNAV systems, LNAV/VNAV NA below -17°C (2°F) or above 54°C (130°F). DME/DME RNP-0.3 NA. Visibility reduction by helicopters NA. When local altimeter setting not received, use Joplin altimeter setting and increase all DA 87 feet and all MDA 100 feet; increase LPV all Cats visibility 1/8 mile, LNAV/VNAV all Cats visibility 3/8 mile, and LNAV Cat C visibility 1/2 mile. VDP and Baro-VNAV NA when using Joplin altimeter setting.

MISSED APPROACH: Climb to 3300 direct RUKOC and hold.

KANSAS CITY CENTER  
**128.6 282.325**

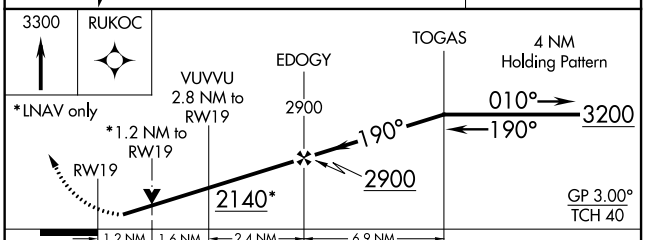
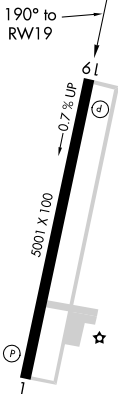
AUNICOM  
**122.8 (CTAF) 0**

△ 2056



△ 1581

ELEV 1255 TDZE 1245



CATEGORY	A	B	C	D
LPV DA	1495-1	250 (300-1)		NA
LNAV/VNAV DA	1692-1½	447 (500-1½)		NA
LNAV MDA	1640-1	395 (400-1)	1640-1¼ 395 (400-1¼)	NA
CIRCLING	1720-1 465 (500-1)	1740-1 485 (500-1)	1740-1½ 485 (500-1½)	NA

REIL Rwy 1 and 19  
MIRL Rwy 1-19