

WAAS CH <b>86216</b> <b>W17A</b>	APP CRS <b>175°</b>	Rwy Idg TDZE Apt Elev	<b>5501</b> <b>1433</b> <b>1433</b>
--	------------------------	-----------------------------	---

# RNAV (GPS) RWY 17

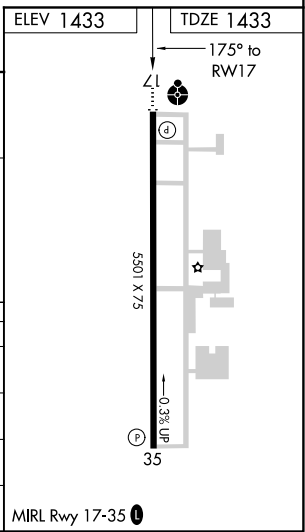
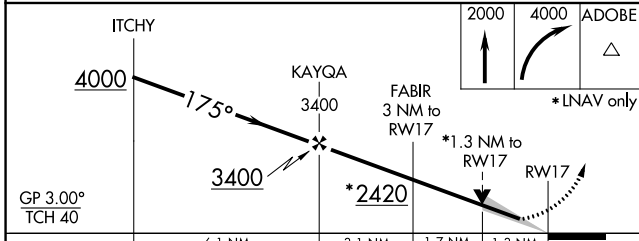
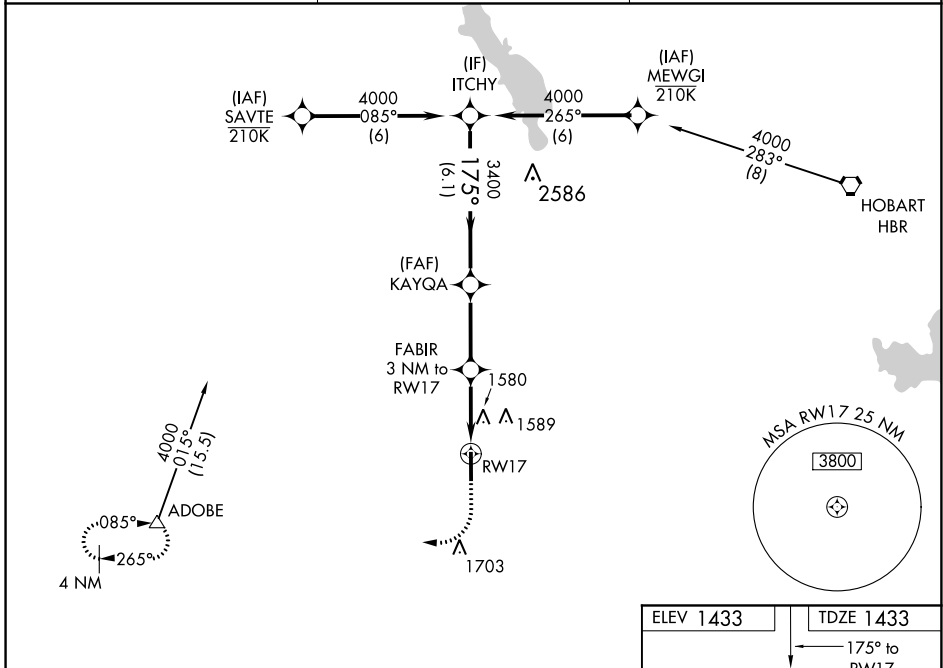
ALTUS/QUARTZ MOUNTAIN RGNL (A.X.S)

**⚠** For uncompensated Baro-VNAV systems, LNAV/VNAV NA below -17°C (2°F) or above 54°C (130°F). Baro-VNAV and VDP NA when using Hobart Rgnl altimeter setting. DME/DME RNP-0.3 NA. When local altimeter setting not received, use Hobart Rgnl altimeter setting and increase LPV DA to 1754 feet and LNAV/VNAV DA to 1997 feet and increase all MDA 80 feet. Increase LPV, LNAV/VNAV all Cats and Circling Cat C visibility ¼ mile, increase LNAV Cat C visibility ⅓ mile.

**ODALS**

**MISSED APPROACH:** Climb to 2000 then climbing right turn to 4000 direct ADOBE and hold.

AWOS-3PT <b>118.825</b>	ALTUS APP CON* <b>125.1 353.7</b>	UNICOM <b>122.8 (CTAF) 0</b>
----------------------------	--------------------------------------	---------------------------------



CATEGORY	A	B	C	D
LPV DA	1683-7/8	250 (300-7/8)		NA
LNAV/VNAV DA	1926-1 3/4	493 (500-1 3/4)		NA
LNAV MDA	1880-1	447 (500-1)	1880-1 3/8 447 (500-1 3/8)	NA
<b>C</b> CIRCLING	1920-1	487 (500-1)	2020-1 1/2 587 (600-1 1/2)	NA

SC-1, 19 MAY 2022 to 16 JUN 2022

SC-1, 19 MAY 2022 to 16 JUN 2022