

ALTUS, OKLAHOMA

AL-5659 (FAA)

21224

VORTAC LTS 109.8 Chan 35	APP CRS 122°	Rwy Idg TDZE Apt Elev N/A N/A 1433
---------------------------------------	------------------------	--

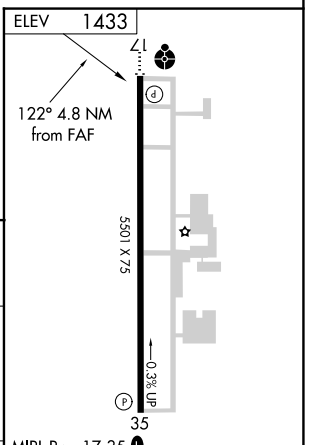
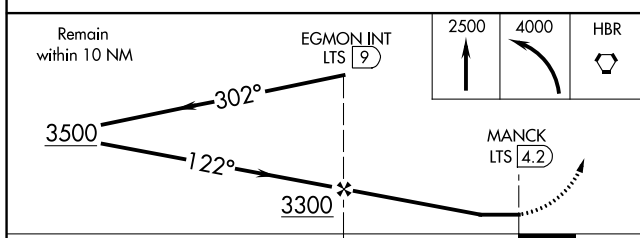
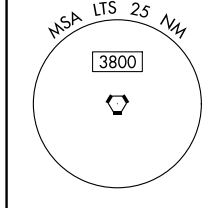
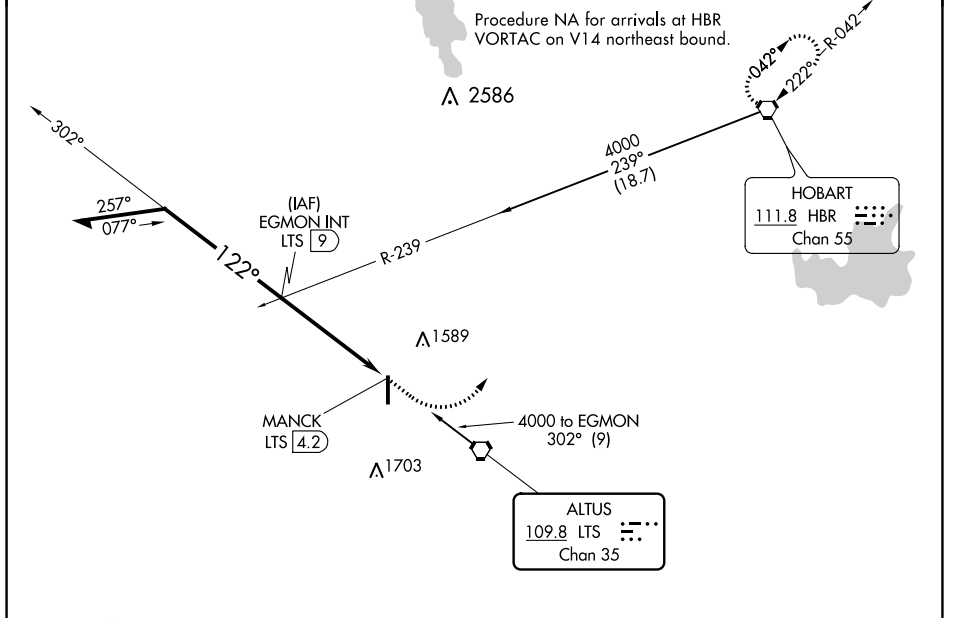
VOR-A

ALTUS/QUARTZ MOUNTAIN RGNL (A.X.S)

⚠ When local altimeter setting not received, use Hobart Rgnl altimeter setting and increase all MDA 80 feet. Increase Circling Cat C visibility ¼ mile.

⚠ MISSED APPROACH: Climb to 2500 then climbing left turn to 4000 direct HBR VORTAC and hold.

AWOS-3PT 118.825	ALTUS APP CON* 125.1 353.7	UNICOM 122.8 (CTAF) 0
----------------------------	--------------------------------------	--



CATEGORY	A		B		C		D		FAF to MAP 4.8 NM				
	1920-1	487 (500-1)	2020-1½	587 (600-1½)	NA	Knots	60	90	120	150	180		
Ⓢ CIRCLING							Min:Sec	4:48	3:12	2:24	1:55	1:36	

ALTUS, OKLAHOMA
Orig 08JAN15

34°42'N-99°20'W

ALTUS/QUARTZ MOUNTAIN RGNL (A.X.S)

VOR-A

SC-1, 19 MAY 2022 to 16 JUN 2022

SC-1, 19 MAY 2022 to 16 JUN 2022