

APP CRS	Rwy Idg	<b>4002</b>
	TDZE	<b>765</b>
<b>021°</b>	Apt Elev	<b>765</b>

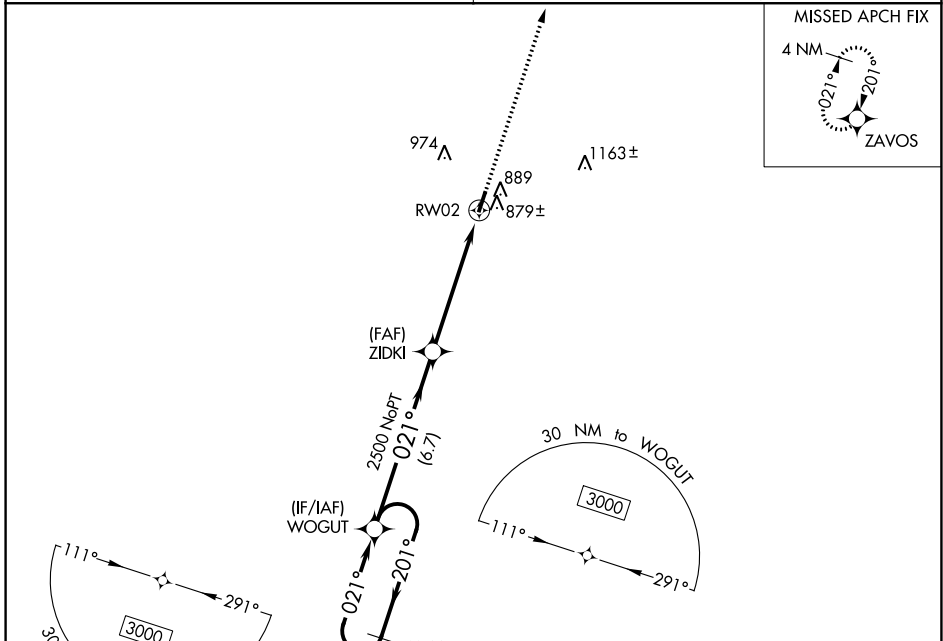
# RNAV (GPS) RWY 2

CENTERVILLE MUNI (GKM)

**NA** Obtain local altimeter setting on CTAF, when not received, use Columbia/Mount Pleasant altimeter setting and increase all MDA 80 feet. Increase LNAV Cats C and D visibility 3/8 mile and Circling Cat D 1/4 mile. DME/DME RNP-0.3 NA. Procedure NA at night. Helicopter visibility reduction below 1 SM NA.

**MISSED APPROACH:** Climb to 3000 direct ZAVOS and hold.

MEMPHIS CENTER **125.85 379.25** UNICOM **122.8** (CTAF) **0**



SE-1, 19 MAY 2022 to 16 JUN 2022

SE-1, 19 MAY 2022 to 16 JUN 2022

ELEV	<b>765</b>	TDZE	<b>765</b>
------	------------	------	------------

