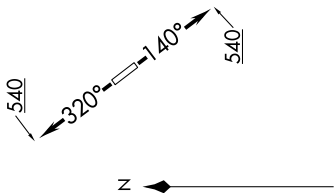


SC-5, 19 MAY 2022 to 16 JUN 2022

CTAF
 122.8
 HOUSTON DEP CON
 134.45 284.0



NOTE: RNAV 1.

NOTE: RADAR required.

NOTE: ATC assigned only.

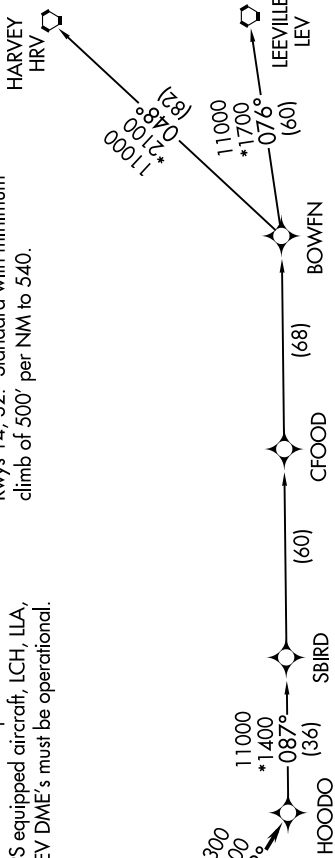
NOTE: DME/DME/IRU or GPS required.

NOTE: For non-GPS equipped aircraft, LCH, ILLA, TBD, and LEV DME's must be operational.

TAKEOFF MINIMUMS

Rwys 14, 32: Standard with minimum climb of 500' per NM to 540.

**TOP ALTITUDE:
 ASSIGNED BY ATC**



NOTE: Chart not to scale.

DEPARTURE ROUTE DESCRIPTION

TAKEOFF RUNWAY 14: Climb on heading 140° to 540, for RADAR vectors to VUH VOR/DME, thence

TAKEOFF RUNWAY 32: Climb on heading 320° to 540, for RADAR vectors to VUH VOR/DME, thence

. . . . on track 118° to HOODO, then on (transition). Maintain ATC assigned altitude.
 Expect filed altitude 10 minutes after departure.

BOWFN TRANSITION (HOODO7.BOWFN)

CFOOD TRANSITION (HOODO7.CFOOD)

HARVEY TRANSITION (HOODO7.HRV)

LEEVILLE TRANSITION (HOODO7.LEV)

SBIRD TRANSITION (HOODO7.SBIRD)

SC-5, 19 MAY 2022 to 16 JUN 2022