

WAAS CH <b>70320</b> <b>W23A</b>	APP CRS <b>227°</b>	Rwy ldg TDZE <b>133</b> Apt Elev <b>133</b>
--	------------------------	---

# RNAV (GPS) RWY 23

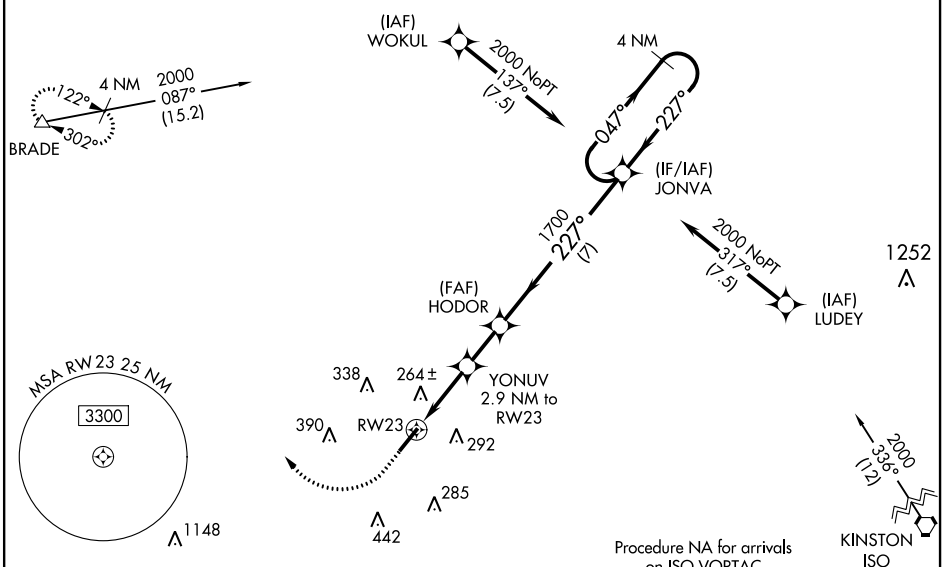
WAYNE EXEC JETPORT (GWW)

RNP APCH.

▼ Baro-VNAV NA when using Smithfield altimeter setting. For uncompensated Baro-VNAV systems, LNAV/VNAV NA below -15°C (5°F) or above 43°C (109°F). VDP NA with Smithfield altimeter setting. When local altimeter setting not received, use Smithfield altimeter setting and increase LPV DA to 387 feet, LNAV/VNAV DA to 499 feet and all MDA 60 feet, increase LNAV/VNAV all Cats and LNAV Cats C/D visibilities ½ SM, and Circling Cat C/D ¼ SM. For inop ALS when using Smithfield altimeter setting, increase LNAV/VNAV visibility all Cats to 1 SM and LNAV visibility Cats A/B to 1 SM and Cats C/D to 1½ SM.

ODALS MISSED APPROACH: Climb to 600 then climbing right turn to 2000 direct BRADE and hold.

AWOS-3P <b>118.975</b>	SEYMOUR JOHNSON APP CON ★ <b>121.175 290.9</b>	UNICOM <b>122.975 (CTAF) 0</b>
---------------------------	---	-----------------------------------



ELEV 133	TDZE 133
----------	----------

600 2000 BRADE VGSI and RNAV glidepath not coincident (VGSI Angle 3.00/TCH 43).

227° to RW23

\*LNAV only.

HODOR JONVA 4 NM Holding Pattern

YONU 2.9 NM to RW23

\*1.1 NM to RW23

1700 1100\* 1700 2000

GP 3.00° TCH 51

CATEGORY	A	B	C	D
LPV DA		333-¾	200 (200-¾)	
LNAV/VNAV DA		445-7/8	312 (400-7/8)	
LNAV MDA	520-¾	387 (400-¾)	520-1	387 (400-1)
CIRCLING	580-1 447 (500-1)	640-1 507 (600-1)	760-1¾ 627 (700-1¾)	760-2 627 (700-2)

SE-2, 19 MAY 2022 to 16 JUN 2022

SE-2, 19 MAY 2022 to 16 JUN 2022