

VORTAC ISO <b>109.6</b> Chan <b>33</b>	APP CRS <b>290°</b>	Rwy Idg TDZE Apt Elev	<b>N/A</b> <b>N/A</b> <b>133</b>
--	------------------------	-----------------------------	--

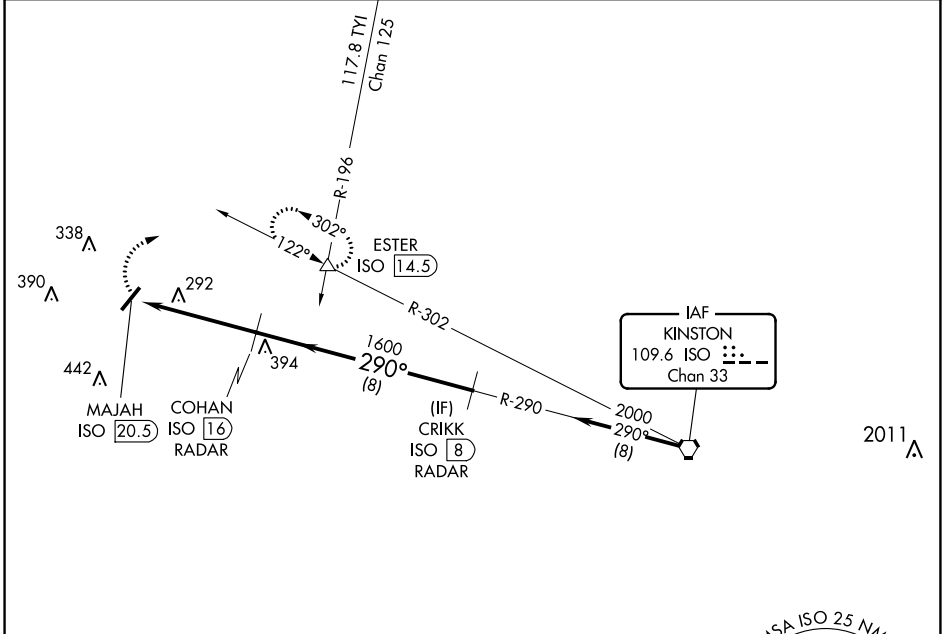
**VOR-A**

WAYNE EXEC JETPORT (GWW)

**⚠** When local altimeter setting not received, use Smithfield altimeter setting and increase all MDAs 60 feet. DME or RADAR required.

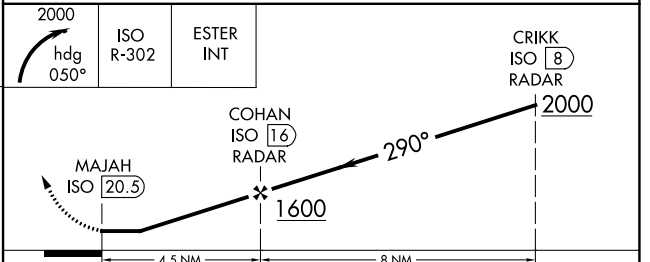
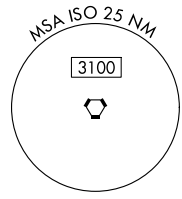
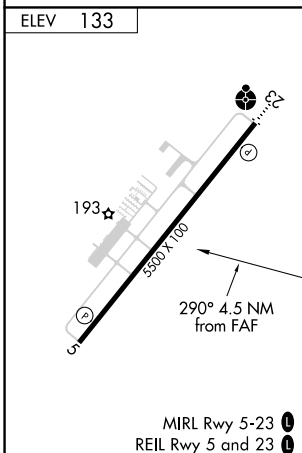
**MISSED APPROACH:** Climbing right turn to 2000 on heading 050° and ISO VORTAC R-302 to ESTER INT/ISO 14.5 DME and hold.

AWOS-3P <b>118.975</b>	SEYMOUR JOHNSON APP CON * <b>121.175 290.9</b>	UNICOM <b>122.975 (CTAF)</b> <b>Ⓛ</b>
---------------------------	---	--



SE-2, 19 MAY 2022 to 16 JUN 2022

SE-2, 19 MAY 2022 to 16 JUN 2022



FAF to MAP 4.5 NM					
Knots	60	90	120	150	180
Min:Sec	4:30	3:00	2:15	1:48	1:30
CATEGORY	A	B	C	D	
CIRCLING	620-1 487 (500-1)	640-1¼ 507 (600-1¼)	760-1¾ 627 (700-1¾)	760-2 627 (700-2)	