

WAAS CH <b>40127</b> <b>W13A</b>	APP CRS <b>131°</b>	Rwy Idg <b>5107</b> TDZE <b>45</b> Apt Elev <b>45</b>
--	------------------------	---

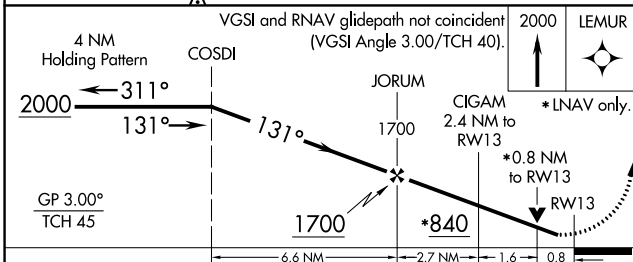
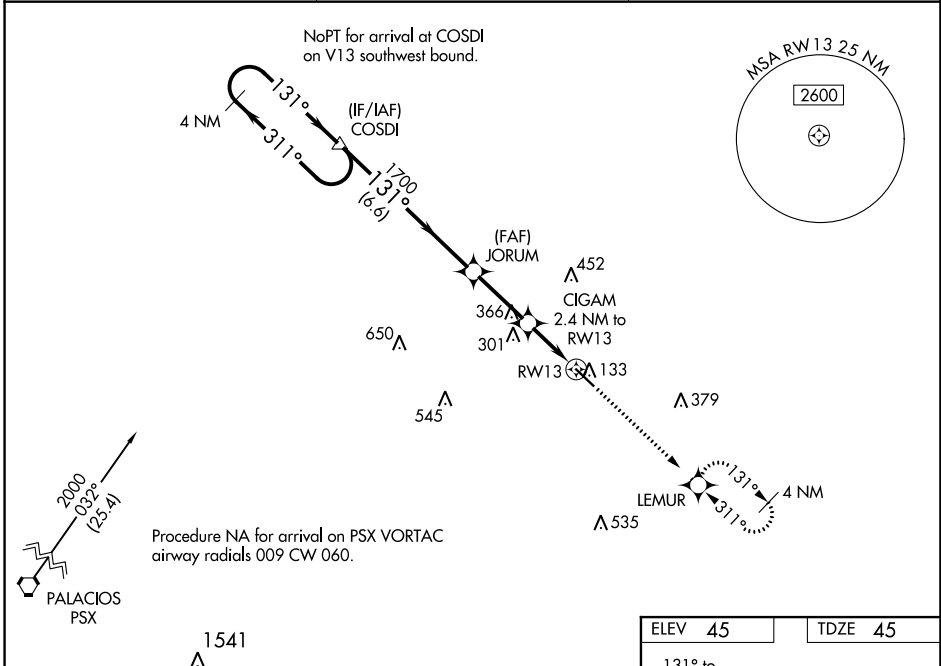
# RNAV (GPS) RWY 13

BAY CITY RGNL (BYY)

**⚠** For uncompensated Baro-VNAV systems, LNAV/VNAV NA below -15°C (5°F) or above 54°C (130°F).  
**⚠** Rwy 13, 31 helicopter visibility reduction below 1 SM NA. RADAR required. DME/DME RNP-0.3 NA.  
 When local altimeter setting not received, use Palacios altimeter setting and increase all DA 63 feet and all MDA 80 feet; increase LNAV visibility Cat C ¼ mile. VDP and Baro-VNAV N/A when using Palacios altimeter setting.

**MISSED APPROACH:**  
 Climb to 2000 direct LEMUR and hold.

AWOS-3 <b>118.075</b>	HOUSTON CENTER <b>128.6 360.8</b>	UNICOM <b>122.8 (CTAF)</b> <b>Ⓛ</b>
--------------------------	--------------------------------------	--



ELEV 45	TDZE 45
---------	---------

131° to RW13

5107 RW13

REIL Rwy 13 **Ⓛ**  
 REIL Rwy 31  
 MIRL Rwy 13-31 **Ⓛ**

CATEGORY	A	B	C	D
LPV DA	295-1	250 (300-1)		NA
LNAV/VNAV DA	295-1	250 (300-1)		NA
LNAV MDA	460-1	415 (500-1)	460-1½ 415 (500-1½)	NA
<b>Ⓛ</b> CIRCLING	500-1	455 (500-1)	620-1½ 575 (600-1½)	NA

SC-5, 19 MAY 2022 to 16 JUN 2022

SC-5, 19 MAY 2022 to 16 JUN 2022