

WAAS CH <b>78326</b> <b>W31A</b>	APP CRS <b>311°</b>	Rwy Idg <b>5107</b> TDZE <b>44</b> Apt Elev <b>45</b>
--	------------------------	---

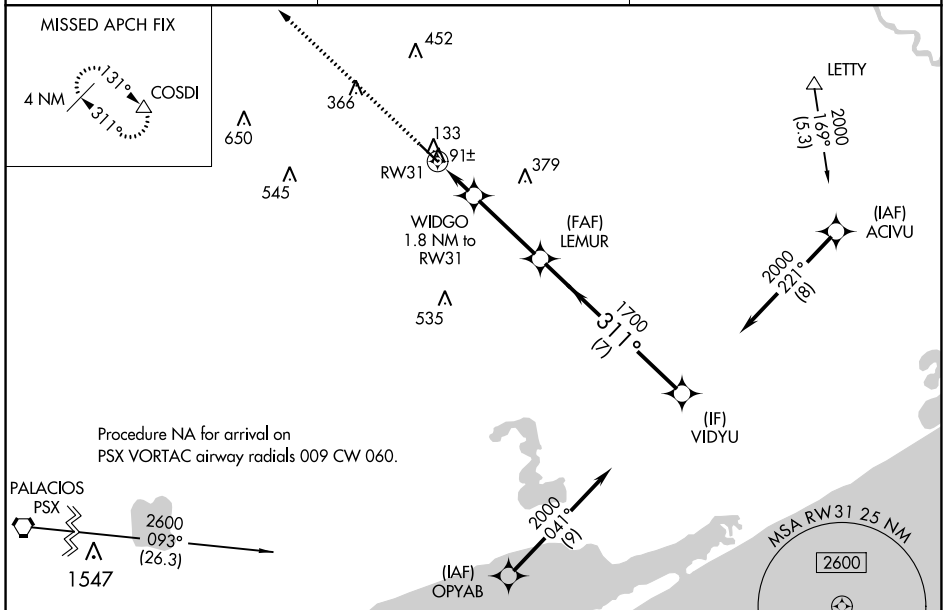
# RNAV (GPS) RWY 31

BAY CITY RGNL (BYY)

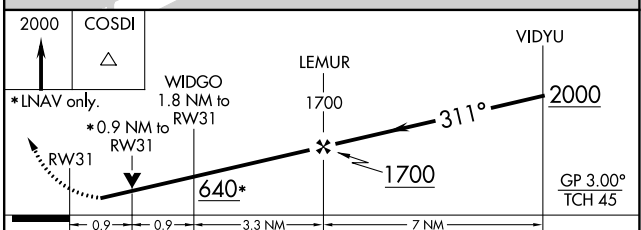
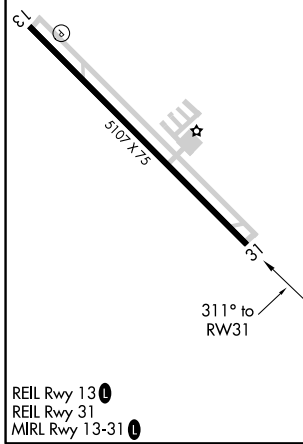
**⚠** For uncompensated Baro-VNAV systems, LNAV/VNAV NA below -15°C (5°F) or above 54°C (130°F). Rwy 13, 31 helicopter visibility reduction below 1 SM NA. DME/DME RNP-0.3 NA. When local altimeter setting not received, use Palacios altimeter setting and increase all DA 63 feet and all MDA 80 feet; increase LNAV visibility Cat C ¼ mile. VDP and Baro-VNAV N/A when using Palacios altimeter setting.

MISSED APPROACH: Climb to 2000 direct COSDI and hold.

AWOS-3 <b>118.075</b>	HOUSTON CENTER <b>128.6 360.8</b>	UNICOM <b>122.8 (CTAF)</b> <b>📻</b>
--------------------------	--------------------------------------	--



ELEV 45	TDZE 44
---------	---------



CATEGORY	A	B	C	D
LPV DA		294-1 250 (300-1)		NA
LNAV/VNAV DA		294-1 250 (300-1)		NA
LNAV MDA		360-1 316 (400-1)		NA
<b>C</b> CIRCLING	500-1	455 (500-1)	620-1½ 575 (600-1½)	NA

SC-5, 19 MAY 2022 to 16 JUN 2022

SC-5, 19 MAY 2022 to 16 JUN 2022