

STRYA EIGHT DEPARTURE (RNAV)

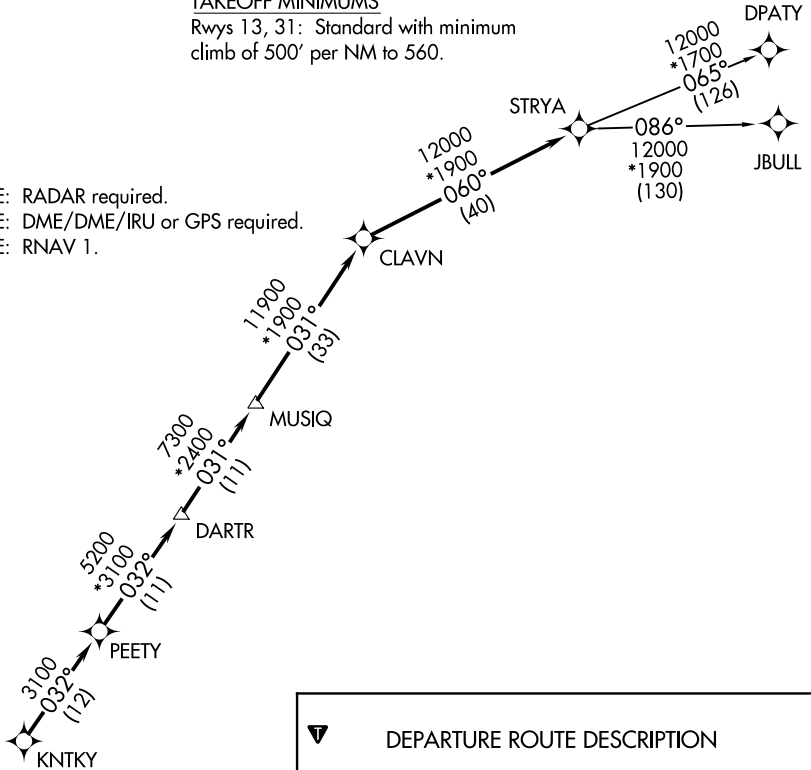
TOP ALTITUDE: ASSIGNED BY ATC

AWOS-3
118.075
CTAF
122.8
HOUSTON CENTER
128.6 360.85

TAKEOFF MINIMUMS

Rwys 13, 31: Standard with minimum climb of 500' per NM to 560.

- NOTE: RADAR required.
- NOTE: DME/DME/IRU or GPS required.
- NOTE: RNAV 1.



▼ DEPARTURE ROUTE DESCRIPTION

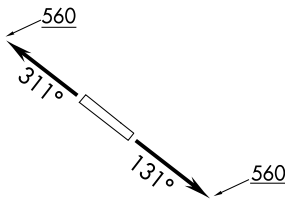
TAKEOFF RUNWAY 13: Climb on heading 131° to 560 for RADAR vectors to KNTKY, thence. . .

TAKEOFF RUNWAY 31: Climb on heading 311° to 560 for RADAR vectors to KNTKY, thence. . .

. . . on track 032° to PEETY, then on track 032° to DARTR, then on track 031° to MUSIQ, then on track 031° to CLAVN, then on track 060° to STRYA, then on (transition). Maintain ATC assigned altitude. Expect filed altitude 10 minutes after departure.

DPATY TRANSITION (STRYA8.DPATY)

JBULL TRANSITION (STRYA8.JBULL)



NOTE: Chart not to scale.

SC-5, 19 MAY 2022 to 16 JUN 2022

SC-5, 19 MAY 2022 to 16 JUN 2022

STRYA EIGHT DEPARTURE (RNAV)