

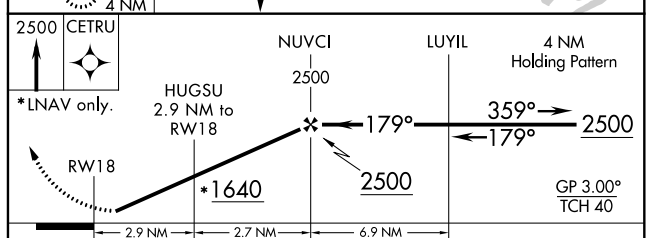
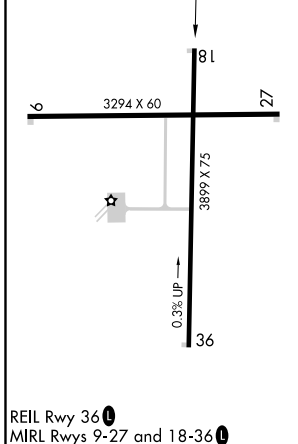
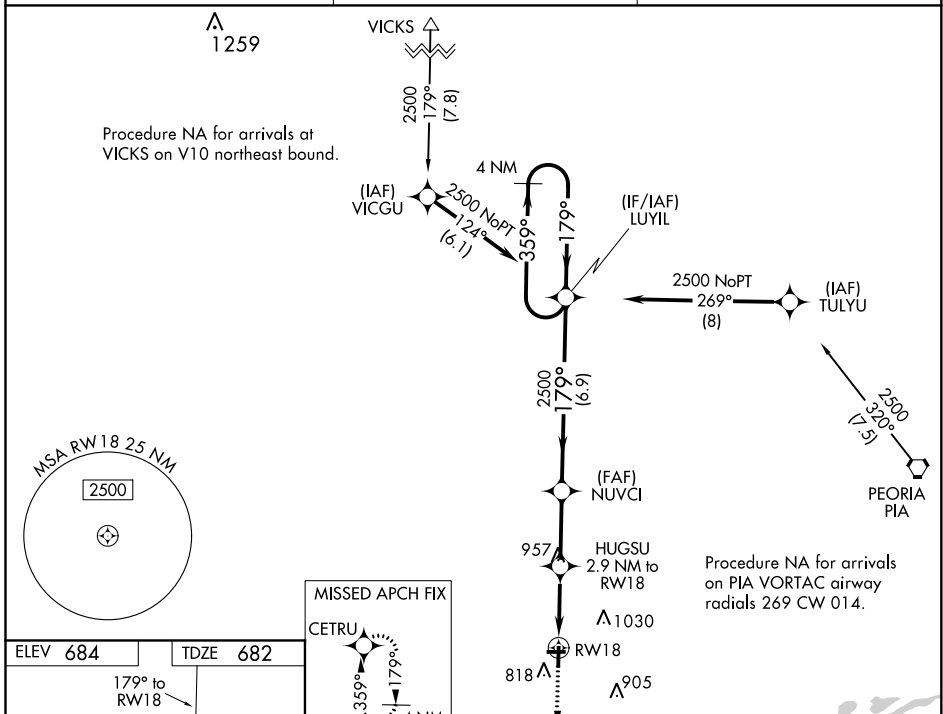
WAAS CH 93931 W18A	APP CRS 179°	Rwy Idg TDZE 682 Apt Elev 684	3899
--	------------------------	---	-------------

RNAV (GPS) RWY 18

INGERSOLL (CTK)

RNP APCH-GPS.	<p>Baro VNAV NA. For uncompensated Baro-VNAV systems, LNAV/VNAV NA below -16°C or above 54°C.</p> <p>NA</p>	<p>MISSED APPROACH: Climb to 2500 direct CETRU and hold.</p>
---------------	---	--

PIA ASOS 126.1 282.2	PEORIA APP CON 124.675 269.2	UNICOM 122.8 (CTAF) 0
--------------------------------	--	---------------------------------



CATEGORY	A	B	C	D
LPV DA	995-1	313 (400-1)		NA
LNAV/VNAV DA	1128-1 ³ / ₈	446 (500-1 ³ / ₈)		NA
LNAV MDA	1280-1	598 (600-1)	1280-1 ³ / ₄ 598 (600-1 ³ / ₄)	NA
CIRCLING	1280-1 596 (600-1)	1440-1 756 (800-1)	1440-2 ¹ / ₄ 756 (800-2 ¹ / ₄)	NA

EC-3, 19 MAY 2022 to 16 JUN 2022

EC-3, 19 MAY 2022 to 16 JUN 2022