

WAAS CH 78331 W36A	APP CRS 359°	Rwy Idg TDZE 680 Apt Elev 684	3899
--	------------------------	---	-------------

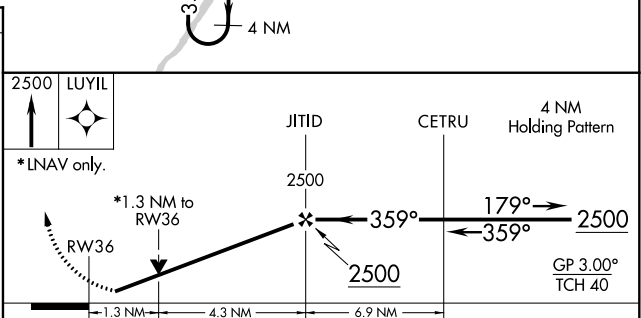
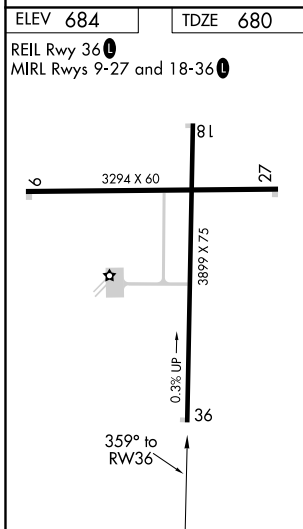
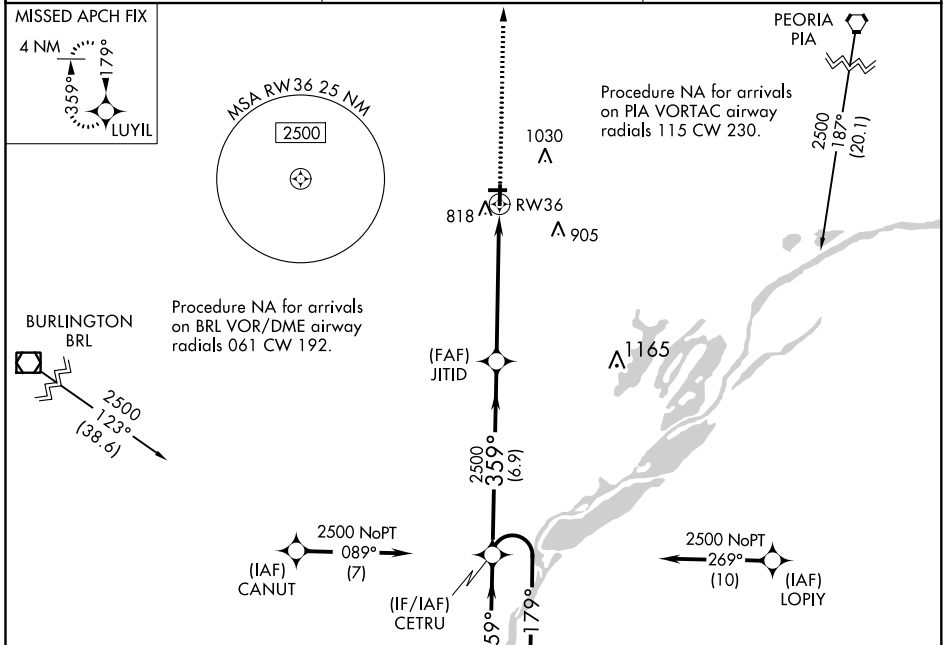
RNAV (GPS) RWY 36

INGERSOLL (CTK)

Baro VNAV NA. For uncompensated Baro-VNAV systems, LNAV/VNAV NA below -16°C (4°F) or above 54°C (130°F). DME/DME RNP-0.3 NA. VDP NA when using General Downing-Peoria Intl altimeter setting.

MISSED APPROACH: Climb to 2500 direct LUYIL and hold.

PIA ASOS 126.1 282.2	PEORIA APP CON 124.675 269.2	UNICOM 122.8 (CTAF) 0
--------------------------------	--	---------------------------------



CATEGORY	A	B	C	D
LPV DA	976-1	296 (300-1)		NA
LNAV/VNAV DA	1044-1	364 (400-1)		NA
LNAV MDA	1180-1	500 (500-1)	1180-1 $\frac{3}{8}$ 500 (500-1 $\frac{3}{8}$)	NA
CIRCLING	1200-1 516 (600-1)	1440-1 756 (800-1)	1440-2 $\frac{1}{4}$ 756 (800-2 $\frac{1}{4}$)	NA

EC-3, 19 MAY 2022 to 16 JUN 2022

EC-3, 19 MAY 2022 to 16 JUN 2022