

WAAS CH 53437 W14A	APP CRS 139°	Rwy ldg 5004 TDZE 30 Apt Elev 32
--	------------------------	---

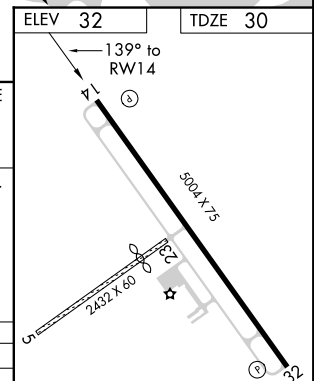
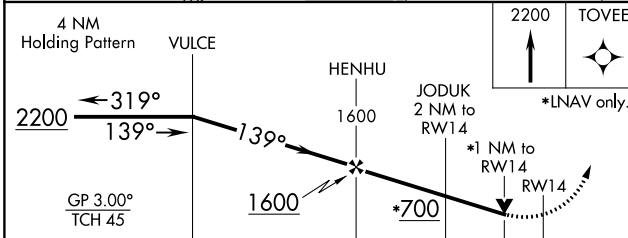
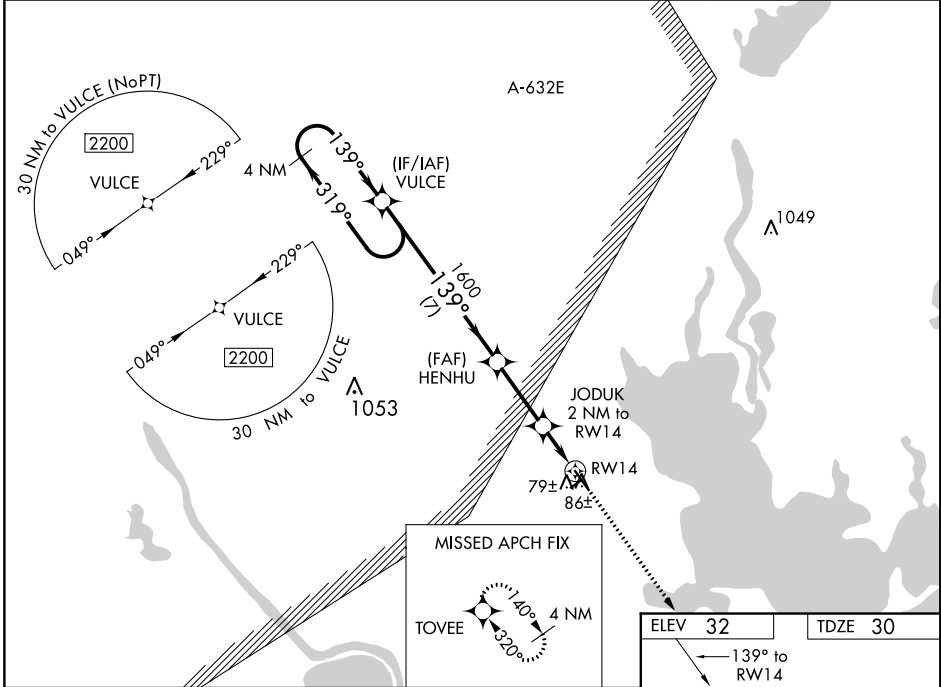
RNAV (GPS) RWY 14

CALHOUN COUNTY (PKV)

⚠ For uncompensated Baro-VNAV systems, LNAV/VNAV NA below -15°C (5°F) or above 54°C (130°F). When local altimeter setting not received, use Victoria altimeter setting and increase all DA/MDA 60 feet and visibilities ¼ mile. DME/DME RNP-0.3 NA. Baro-VNAV and VDP NA with Victoria altimeter setting. Helicopter visibility reduction below ¾ SM NA. Night landing: Rwy 32 NA. Circling NA to Rwy 5 and 23.

MISSED APPROACH:
Climb to 2200 direct TOVEE and hold.

AWOS-3 118,275	HOUSTON CENTER 128,15 350.3	UNICOM 122.8 (CTAF) 0
--------------------------	---------------------------------------	---------------------------------



		7 NM		2.8 NM	1 NM	1 NM
CATEGORY	A	B	C		D	
LPV DA	280-¾		250 (300-¾)		NA	
LNAV/VNAV DA	280-¾		250 (300-¾)		NA	
LNAV MDA	440-1	410 (500-1)		440-1½ 410 (500-1½)		NA
C CIRCLING	480-1 448 (500-1)	500-1 468 (500-1)		560-1½ 528 (600-1½)		NA

ELEV 32	TDZE 30
----------------	----------------

SC-5, 19 MAY 2022 to 16 JUN 2022

SC-5, 19 MAY 2022 to 16 JUN 2022