

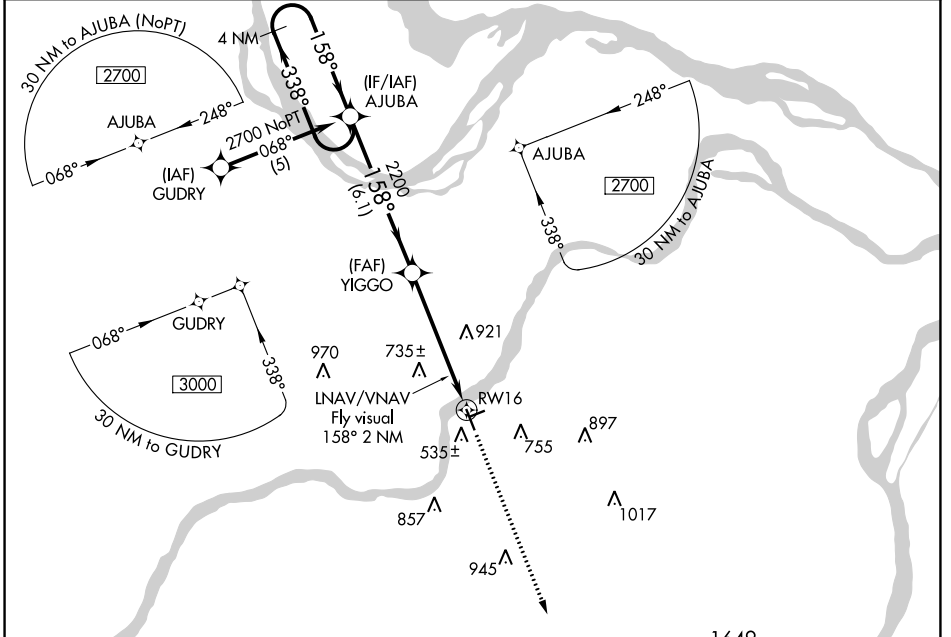
WAAAS CH <b>50403</b> <b>W16A</b>	APP CRS <b>158°</b>	Rwy Idg TDZE Apt Elev	<b>4500</b> <b>451</b> <b>462</b>
---	------------------------	-----------------------------	---

# RNAV (GPS) RWY 16

CREVE COEUR (1H0)

RNP APCH.	MISSED APPROACH: Climb to 2800 direct ODUJY and hold.
<p>Baro-VNAV NA. Rwy 16 helicopter visibility reduction below 1 SM NA. Use St Louis Lambert Intl altimeter setting. Straight-in Rwy 16 NA at night, Circling Rwy 16 NA at night. Circling NA to Rwy's 7 and 25.</p>	

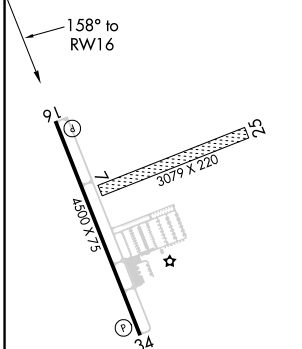
ST. LOUIS APP CON <b>126.5 254.3</b>	UNICOM <b>122.8 (CTAF) 0</b>
---	---------------------------------



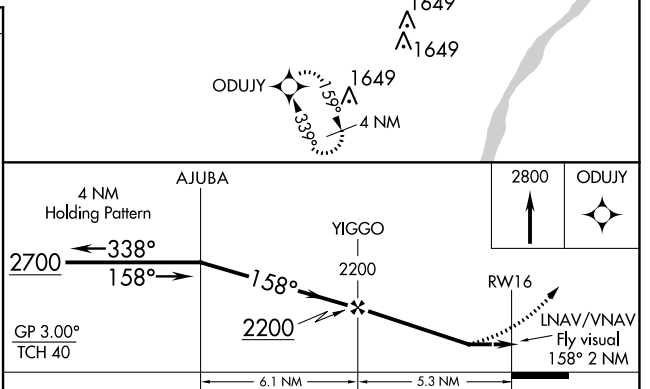
NC-3, 19 MAY 2022 to 16 JUN 2022

NC-3, 19 MAY 2022 to 16 JUN 2022

ELEV <b>462</b>	TDZE <b>451</b>
-----------------	-----------------



REIL Rwy's 16 and 34	MIRL Rwy 16-34
----------------------	----------------



CATEGORY	A	B	C	D
LPV DA	912-1¾	461 (500-1¾)		NA
LNAV/VNAV DA	1130-2	679 (700-2)		NA
LNAV MDA	1160-1	709 (700-1)		NA
CIRCLING	1160-1	698 (700-1)		NA