

APP CRS	Rwy Idg	<b>4887</b>
<b>175°</b>	TDZE	<b>707</b>
	Apt Elev	<b>719</b>

# RNAV (GPS) RWY 17

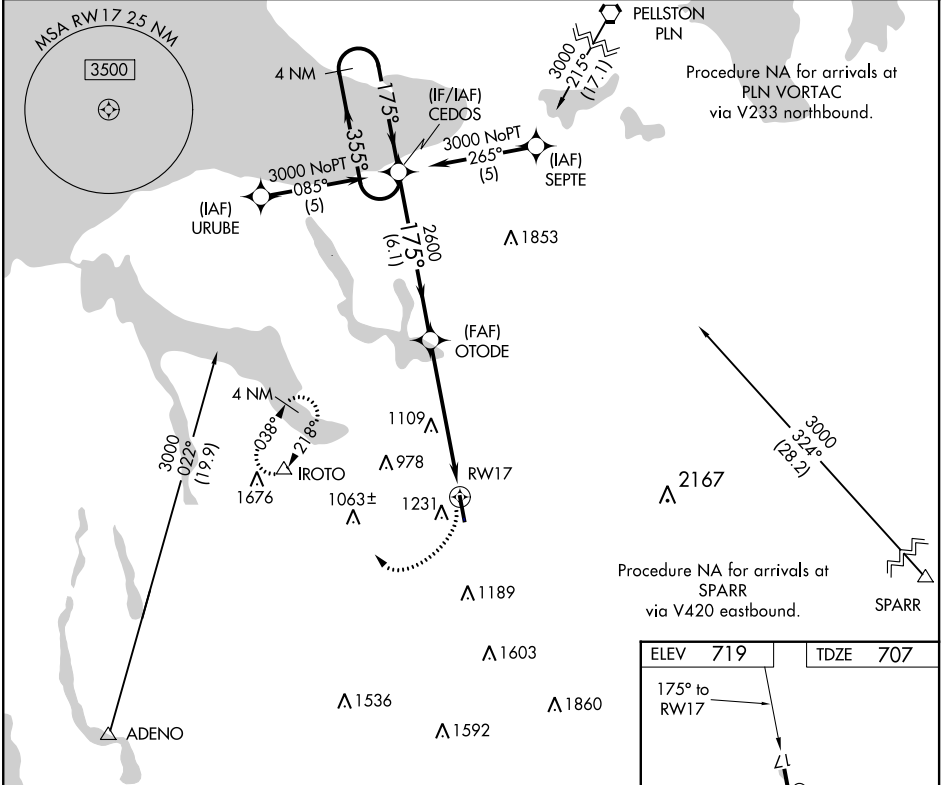
BOYNE MOUNTAIN (BFA)

RNP APCH

**NA** Circling NA west of Rwy 17-35. Use Bellaire altimeter setting; when not received, use Pellston altimeter setting and increase all MDAs 20 feet and increase LNAV Cat A visibility ¼ SM. Rwy 17 helicopter visibility reduction below 1 SM NA. Procedure NA at night.

**MISSED APPROACH:**  
Climbing right turn to 3000 direct IROTO and hold.

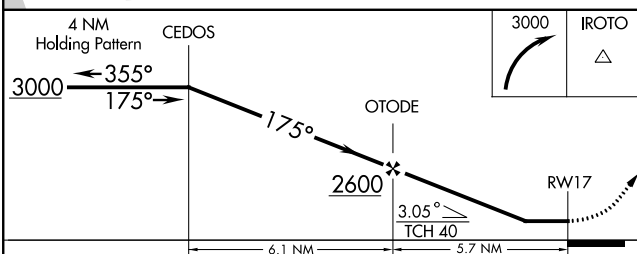
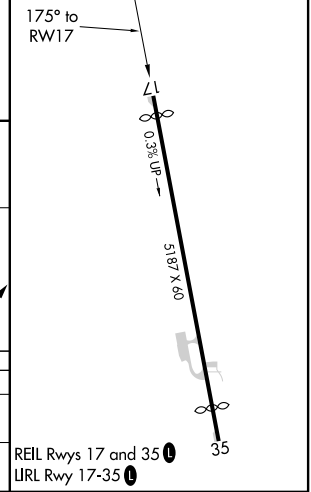
MINNEAPOLIS CENTER <b>134.6 354.05</b>	UNICOM <b>122.8 (CTAF)</b>	<b>122.85</b>
---	-------------------------------	---------------



Procedure NA for arrivals at PLN VORTAC via V233 northbound.

Procedure NA for arrivals at SPARR via V420 eastbound.

ELEV 719	TDZE 707
----------	----------



CATEGORY	A	B	C	D
LNAV MDA	1580 - 1 873 (900-1)	1580 - 1¼ 873 (900-1¼)	1580 - 2½ 873 (900-2½)	1580 - 2¾ 873 (900-2¾)
CIRCLING	1580 - 1¼ 861 (900-1¼)	1760 - 3 1041 (1100-3)	1880 - 3 1161 (1200-3)	

EC-1, 19 MAY 2022 to 16 JUN 2022

EC-1, 19 MAY 2022 to 16 JUN 2022