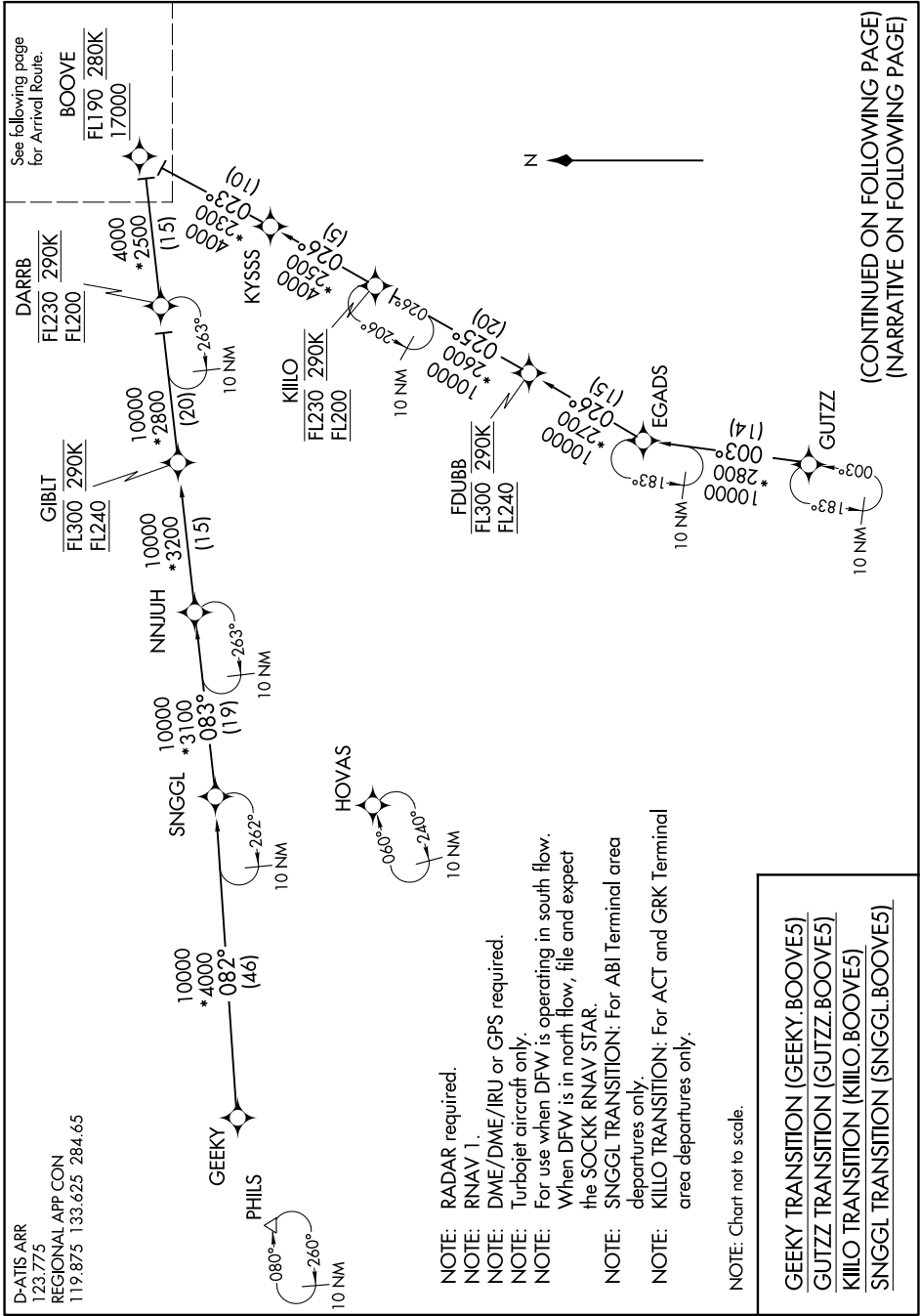


BOOVE FIVE ARRIVAL (RNAV) Transition Routes

SC-2, 19 MAY 2022 to 16 JUN 2022



(CONTINUED ON FOLLOWING PAGE)
(NARRATIVE ON FOLLOWING PAGE)

- NOTE: RADAR required.
- NOTE: RNAV 1.
- NOTE: DME/DME/IRU or GPS required.
- NOTE: Turboprop aircraft only.
- NOTE: For use when DFW is operating in south flow. When DFW is in north flow, file and expect the SOCKK RNAV STAR.
- NOTE: SNGGL TRANSITION: For ABI Terminal area departures only.
- NOTE: KILLO TRANSITION: For ACT and GRK Terminal area departures only.

NOTE: Chart not to scale.

GEEKY TRANSITION (GEEKY.BOOVE5)
 GUTZZ TRANSITION (GUTZZ.BOOVE5)
 KILLO TRANSITION (KILLO.BOOVE5)
 SNGGL TRANSITION (SNGGL.BOOVE5)

SC-2, 19 MAY 2022 to 16 JUN 2022

BOOVE FIVE ARRIVAL (RNAV) Transition Routes