

BRDJE THREE ARRIVAL (RNAV) Transition Routes

D-ATIS ARR
123.775
REGIONAL APP CON
125.025 263.025

- NOTE: RADAR required.
- NOTE: RNAV 1.
- NOTE: DME/DME/IRU or GPS required.
- NOTE: Turbojet aircraft only.
- NOTE: For use when DFW is operating in a north flow.
When DFW is in south flow, expect and file the SEEVR RNAV STAR.

AXXEE TRANSITION (AXXEE.BRDJE3):

(for aircraft filing FL230 and below)

CHMLI TRANSITION (CHMLI.BRDJE3):

(ATC assigned only)

FEWWWW TRANSITION (FEWWWW.BRDJE3)

HITUG TRANSITION (HITUG.BRDJE3)

JRHED TRANSITION (JRHED.BRDJE3):

(ATC assigned only)

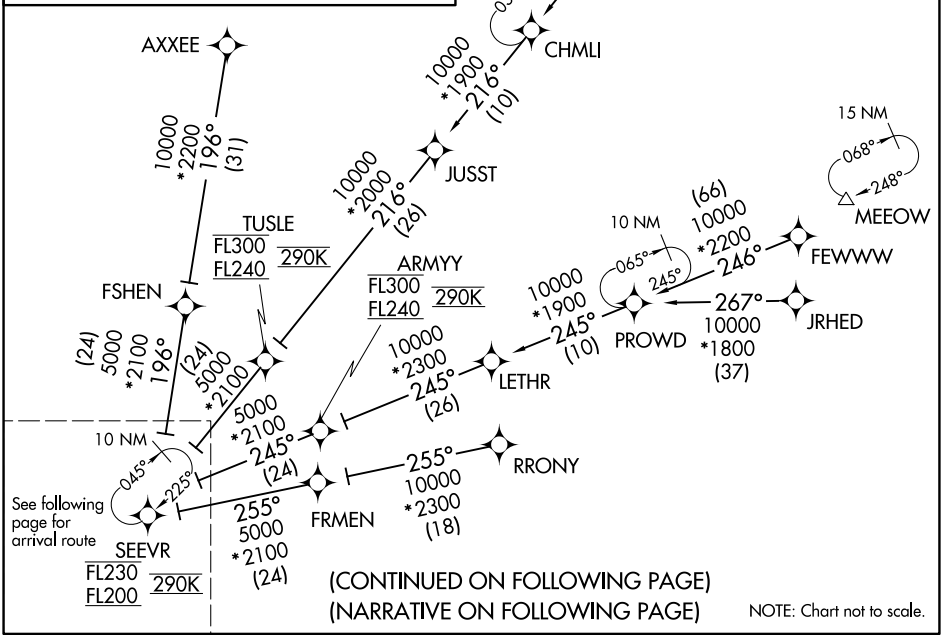
PROWD TRANSITION (PROWD.BRDJE3):

(ATC assigned only)

RRNET TRANSITION (RRNET.BRDJE3)

RRONY TRANSITION (RRONY.BRDJE3):

(for aircraft filing FL230 and below)



(CONTINUED ON FOLLOWING PAGE)
(NARRATIVE ON FOLLOWING PAGE)

NOTE: Chart not to scale.

SC-2, 19 MAY 2022 to 16 JUN 2022

SC-2, 19 MAY 2022 to 16 JUN 2022

BRDJE THREE ARRIVAL (RNAV) Transition Routes

(SEEVR.BRDJE3) 31MAY16