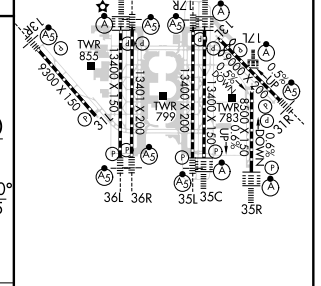
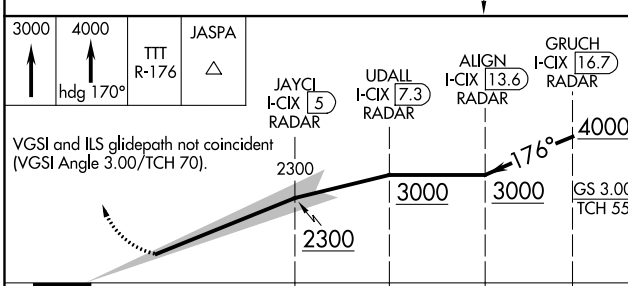
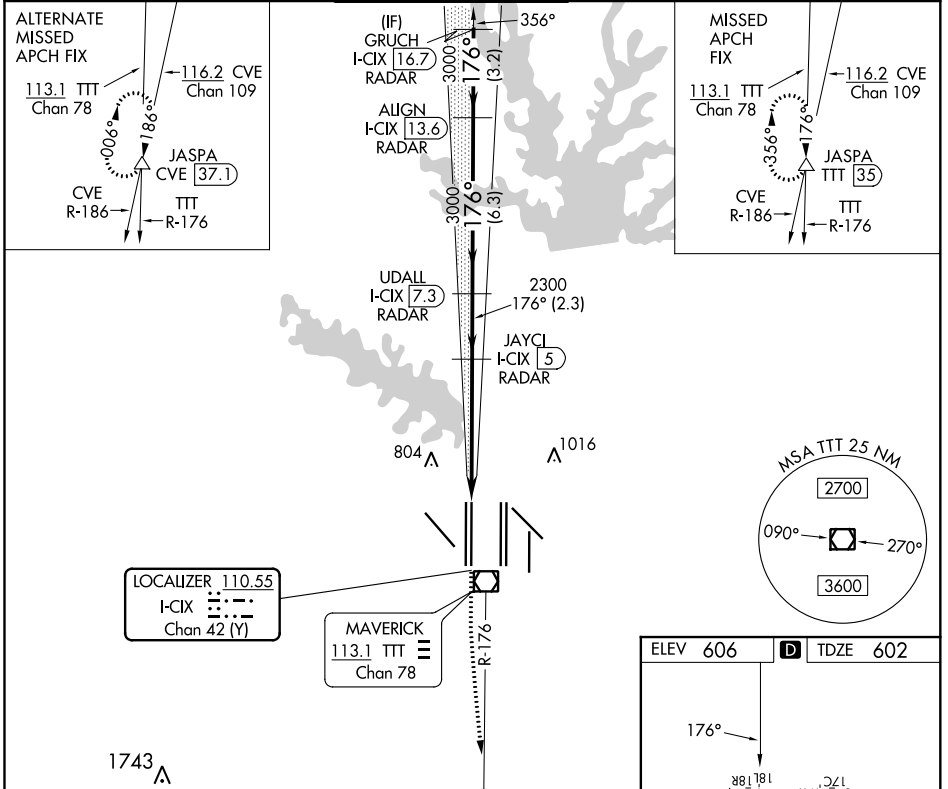


LOC/DME I-CIX 110.55 Chan 42 (Y)	APP CRS 176°	Rwy ldg 13401 TDZE 602 Apt Elev 606
--	------------------------	--

CONVERGING ILS RWY 18L

DALLAS-FORT WORTH INTL (DFW)

DME and RADAR required.		MALS	MISSED APPROACH: Climb to 3000, then climb to 4000 on heading 170° and TTT VOR/DME R-176 to JASPA/TTT 35 DME and hold.			
<p>Simultaneous approach authorized with CONVERGING ILS RWY 13R.</p>						
D-ATIS ARR 123.775 DEP 135.925	REGIONAL APP CON 118.425	DFW TOWER 126.55 127.5 EAST 124.15 134.9 WEST		GND CON 121.65 121.8 EAST 121.85 WEST	CLNC DEL 128.25	CPDLC



ELEV 606	D TDZE 602
<p>3000 4000 TTT JASPA ↑ hdg 170° R-176 △</p>	
<p>VGS and ILS glidepath not coincident (VGS Angle 3.00/TCH 70).</p>	
<p>3000 2300 3000 3000 4000 5.2 NM 2.3 NM 6.3 NM 3.2 NM</p>	
CATEGORY	A B C D
S-ILS 18L	802/18 200 (200-½)
<p>HIRL all Rwy's REIL Rwy's 13L and 31L TDZ/CL all Rwy's except 13L and 31L</p>	

CONVERGING ILS RWY 18L

SC-2, 19 MAY 2022 to 16 JUN 2022

SC-2, 19 MAY 2022 to 16 JUN 2022