

LOC/DME I-VYVY 111.9 Chan 56	APP CRS 176°	Rwy Idg 13400
		TDZE 607
		Apt Elev 607

CONVERGING ILS RWY 18R

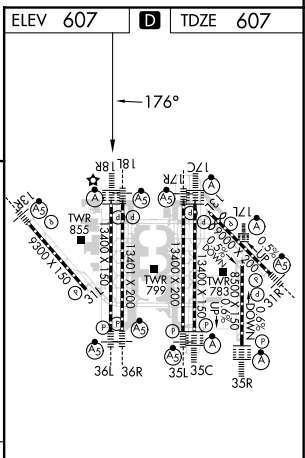
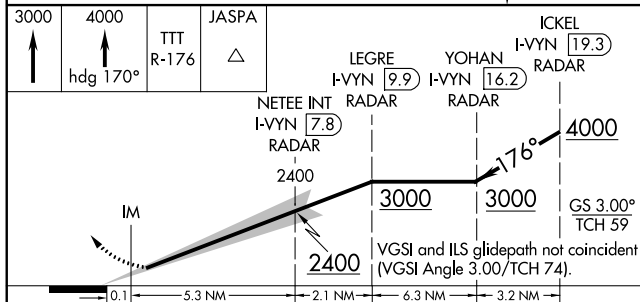
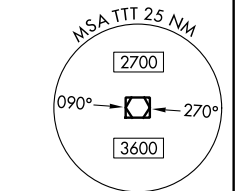
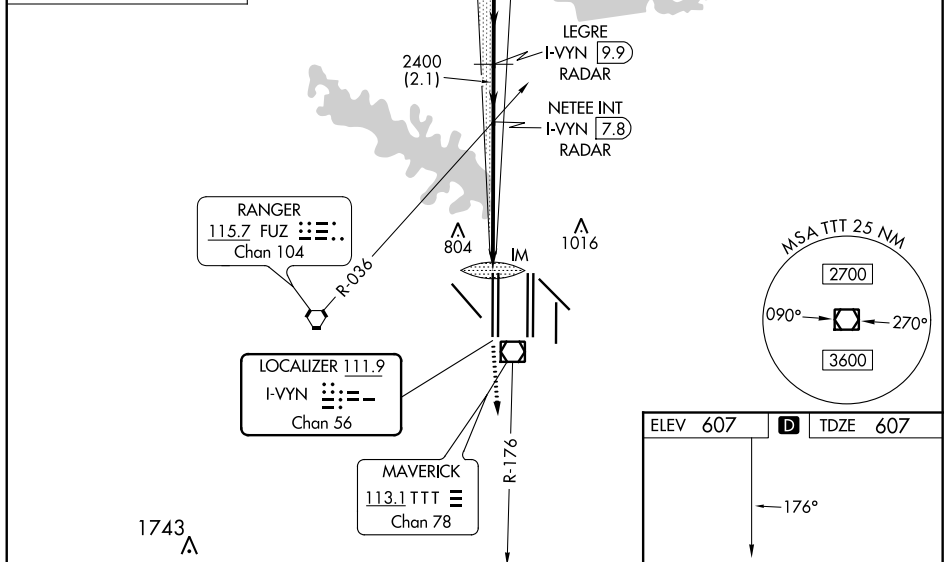
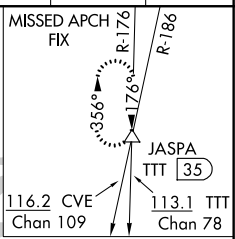
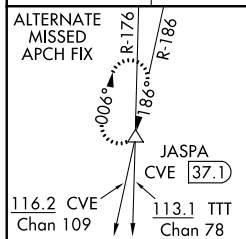
DALLAS-FORT WORTH INTL (DFW)

DME and RADAR required.

Simultaneous approach authorized with CONVERGING ILS RWY 13R, CONVERGING ILS RWY 17C, and CONVERGING ILS 17R.

ALSF-2 MISSED APPROACH: Climb to 3000 then climb to 4000 on heading 170° and TTT VOR/DME R-176 to JASPA/TTT 35 DME and hold.

D-ATIS ARR 123.775 DEP 135.925	REGIONAL APP CON 118.425	DFW TOWER 126.55 127.5 EAST 124.15 134.9 WEST	GND CON 121.65 121.8 EAST 121.85 WEST	CLNC DEL 128.25	CPDLC
--	------------------------------------	---	---	---------------------------	-------



CATEGORY	A	B	C	D
S-ILS 18R		807/18	200 (200-1/2)	

HIRL all Rwys
REIL Rwy 13L and 31L
TDZ/CL all Rwys except 13L and 31L

CONVERGING ILS RWY 18R

SC-2, 19 MAY 2022 to 16 JUN 2022

SC-2, 19 MAY 2022 to 16 JUN 2022